

**Boise State University**  
**10<sup>th</sup> Day Profile of New Academic Freshmen**  
**Spring 2009**

**Notes:** This cohort profile reflects the statistics for first-time, degree-seeking, academic students, including new freshmen who completed university courses while in high school. The following groups are excluded from the cohort: nondegree-seeking, concurrent high school, Bridge, and second undergraduate degree.

**Yield Statistics**

	<b>Number</b>	<b>Percent</b>
<b>New Freshmen Apps</b>	706	18.6% of all applicants
<b>New Freshmen Admits</b>	365	51.7% of freshman applicants
<b>New Freshmen Enrolled</b>	360	98.6% of freshman admits

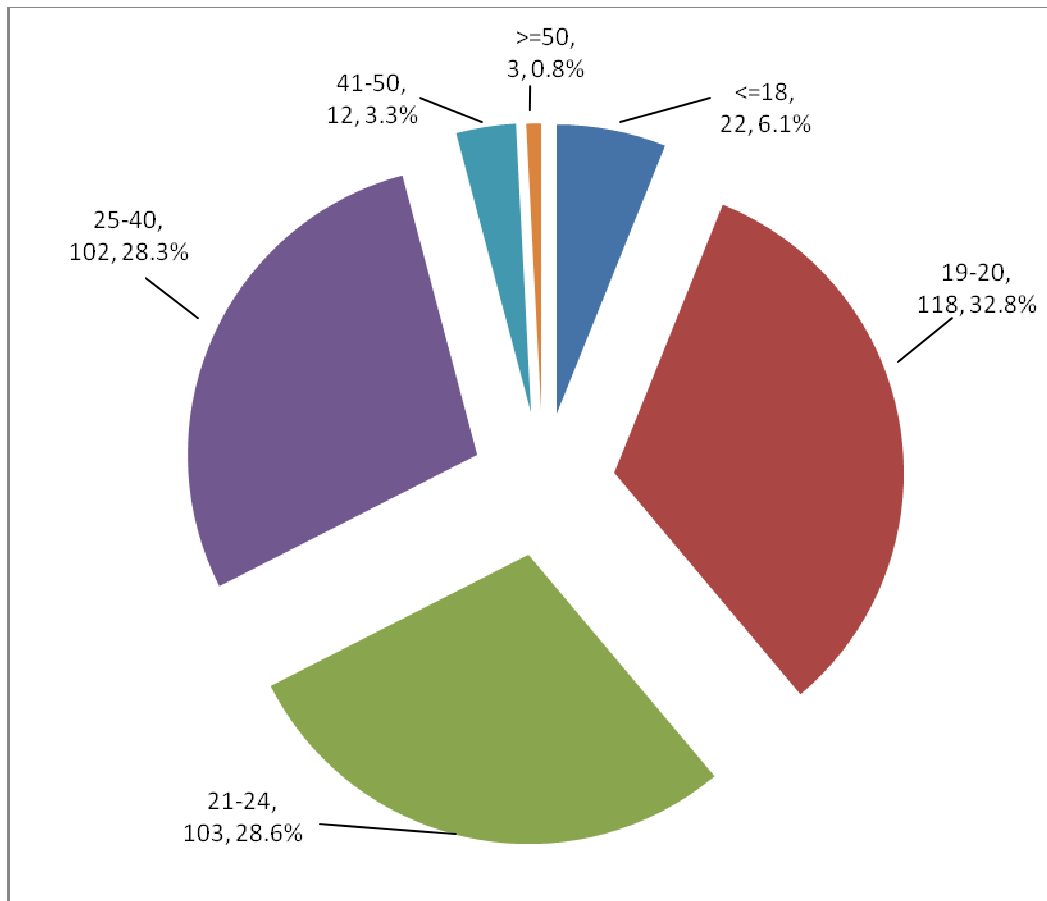
**Original Admission Classification**

	<b>Number</b>	<b>Percent</b>
<b>Admitted with in-progress or unofficial documents</b>	42	11.7%
<b>Admitted with final documents</b>	160	44.4%
<b>Admitted with final documents with Provisions</b>	158	43.9%

**Denied Admission**

	<b>Number</b>	<b>Percent</b>
<b>Originally Denied</b>	116	16.4% of freshman applicants
<b>Petitions Approved (included in Degree-seeking number)*</b>	1	0.01% of denied
<b>Admitted as Degree-seeking (includes petitions)</b>	1	0.01% of denied
<b>Changed to Nondegree</b>	44	37.9% of denied
<b>Remain Denied</b>	71	61.2% of denied
<b>Originally Denied</b>	116	16.4% of freshman applicants

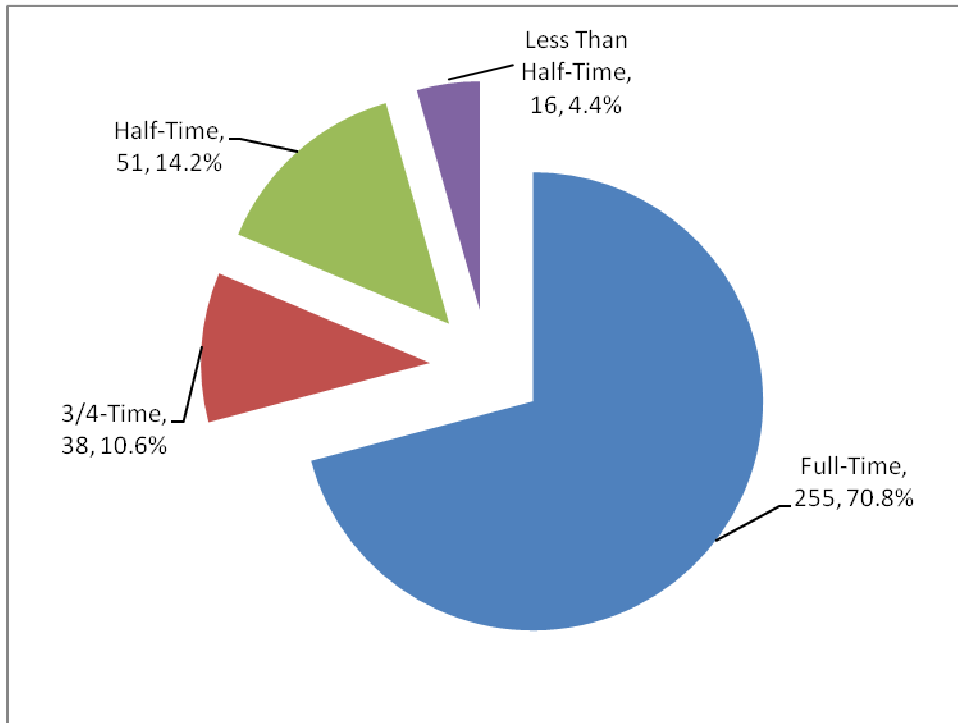
## Age



## Gender

	Number	Percent
Female	164	45.6%
Male	194	53.8%
Undeclared	2	0.6%

## Credit Load



## Ethnicity

	Number	Percent
<b>Asian</b>	5	1.4%
<b>Black/African American</b>	13	3.6%
<b>Hispanic/Latino</b>	24	6.7%
<b>American Indian/Alaska Native</b>	5	1.4%
<b>Native Hawaiian/Other Pacific Islander</b>	3	0.8%
<b>White</b>	281	78.1%

## Citizenship

	Number	Percent
<b>International</b>	11	3.1%
<b>Permanent Resident</b>	12	3.3%
<b>US Citizen</b>	336	93.3%
<b>Not Indicated</b>	1	0.3%

**Top Countries (from country of citizenship)**

	<b>Number</b>	<b>Percent</b>
<b>1. United States of America</b>	348	96.7%
<b>2. Saudi Arabia</b>	2	0.6%
<b>2. Mexico</b>	2	0.6%
<b>4. Saudi Arabia</b>	1	0.3%
<b>4. Sweden</b>	1	0.3%
<b>4. New Zealand</b>	1	0.3%
<b>4. Nepal</b>	1	0.3%
<b>4. United Kingdom</b>	1	0.3%
<b>4. Ethiopia</b>	1	0.3%
<b>4. Brazil</b>	1	0.3%
<b>4. Bosnia &amp; Herzegovina</b>	1	0.3%
<b>4. Australia</b>	1	0.3%
<b>Number of Countries Represented</b>	<b>12</b>	

**Resident/Nonresident**

	<b>Number</b>	<b>Percent</b>
<b>Resident</b>	321	89.2%
<b>Nonresident</b>	39	10.8%

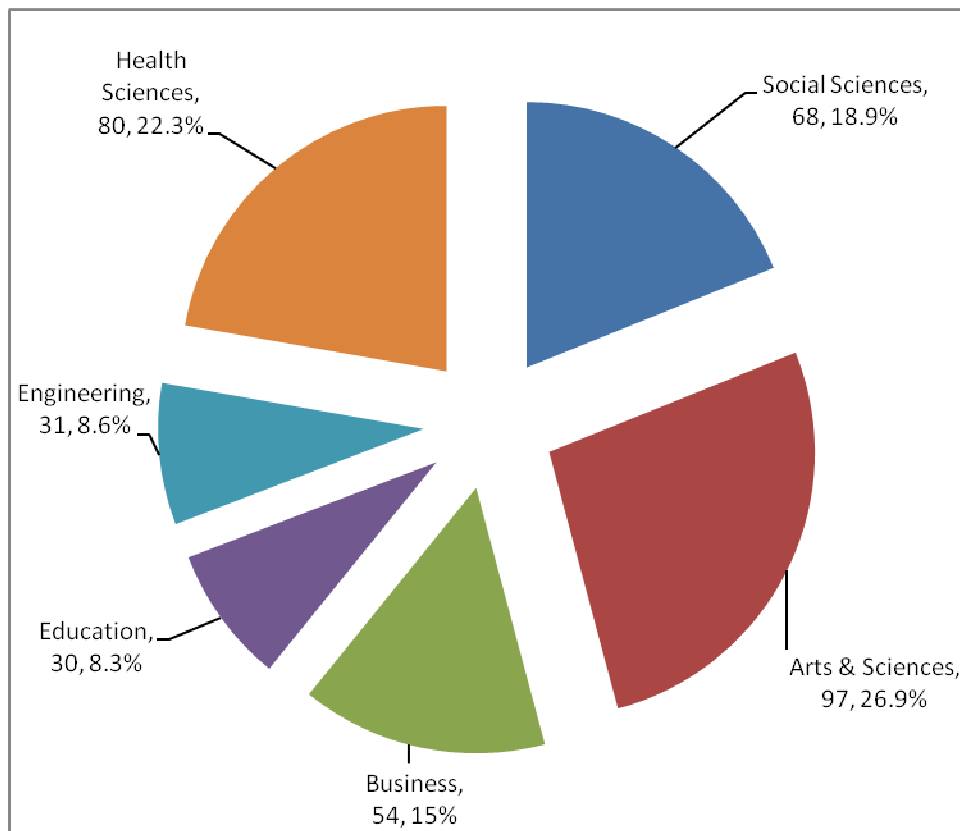
**Top States (from original permanent address)**

	<b>Number</b>	<b>Percent</b>
<b>1. Idaho</b>	320	88.9%
<b>2. Washington</b>	7	1.9%
<b>2. California</b>	7	1.9%
<b>4. Oregon</b>	6	1.7%
<b>5. Nevada</b>	3	0.8%
<b>6. Texas</b>	2	0.6%
<b>7. Montana</b>	1	0.3%
<b>7. Michigan</b>	1	0.3%
<b>7. Missouri</b>	1	0.3%
<b>Total US States Represented</b>	<b>9</b>	

### Top Cities

	Number	Percent
<b>1. Boise</b>	176	48.9%
<b>2. Meridian</b>	39	10.8%
<b>3. Nampa</b>	23	6.4%
<b>4. Eagle</b>	11	3.1%
<b>5. Mountain Home</b>	9	2.5%
<b>6. Caldwell</b>	7	1.9%
<b>6. Kuna</b>	7	1.9%
<b>8. Emmett</b>	6	1.7%
<b>9. Middleton</b>	5	1.4%
<b>10. New Plymouth</b>	4	1.1%

### College of Major



### Top Majors

	Number	Percent
<b>Undecided</b>	44	12.2%
<b>Pre-Nursing</b>	32	8.9%
<b>Psychology</b>	16	4.4%

<b>Business-Undeclared</b>	13	3.6%
<b>Business &amp; Economics</b>	13	3.6%
<b>Biology</b>	12	3.3%
<b>Health Science Studies</b>	10	2.8%
<b>Criminal Justice</b>	10	2.8%
<b>Social Work</b>	10	2.8%
<b>Education-Undeclared</b>	9	2.5%
<b>Pre-Medical</b>	8	2.2%
<b>Communications</b>	6	1.7%
<b>Health Science-Undeclared</b>	6	1.7%
<b>Elementary Education</b>	6	1.7%
<b>Engineering-General</b>	6	1.7%
<b>History</b>	6	1.7%
<b>Marketing</b>	6	1.7%
<b>Mechanical Engineering</b>	6	1.7%
<b>Pre-Pharmacy</b>	6	1.7%

#### Top High Schools

	Number	Percent
<b>1. Borah (3)</b>		
<b>2. Mountain View (2)</b>		
<b>3. Capital (1)</b>		
<b>4. Eagle (7)</b>		
<b>5. Centennial (5)</b>		
<b>6. Meridian (8)</b>		
<b>7. GED Idaho (4)</b>		
<b>8. Boise (6)</b>		
<b>9. Timberline (9)</b>		
<b>10. Kuna (13)</b>		
<b>11. Skyview (10)</b>		
<b>12. Vallivue (14)</b>		
<b>13. Mountain Home (15)</b>		
<b>14. Nampa (11)</b>		
<b>14. Foreign HS *</b>		
<b>16. Cole Valley Christian*</b>		
<b>17. Caldwell (11)</b>		
<b>17. Bishop Kelly (18)</b>		
<b>19. Emmett (15)</b>		
<b>20. Columbia*</b>		
<b>21. Idaho Falls (17)</b>		

#### High School GPA

	Number	Percent
--	--------	---------

<b>4.0</b>	3	0.8%
<b>&gt;=3.5 (includes 4.0)</b>	46	12.7%
<b>3.0-3.49</b>	91	25.3%
<b>2.5-2.99</b>	80	22.2%
<b>2.0-2.49</b>	42	11.7%
<b>&lt;2.0</b>	5	1.4%
<b>Average GPA (overall new freshmen)</b>		2.99

#### High School Class Rank

	<b>Number</b>	<b>Percent</b>
<b>1<sup>st</sup> (n=27) 2<sup>nd</sup> (n=15) 3<sup>rd</sup> (n=15)</b>		
<b>Top 10% (includes 1<sup>st</sup>, 2<sup>nd</sup>, 3<sup>rd</sup>)</b>		
<b>Top Quarter (includes top 10%)</b>		
<b>Second Quarter</b>		
<b>Third Quarter</b>		
<b>Bottom Quarter</b>		
<b>Average Class Rank</b>		

#### ACT Scores

	<b>Number</b>	<b>Percent</b>
<b>Top Quarter (24-36 Comp)</b>	36	20.5%
<b>Second Quarter (21-23 Comp)</b>	43	24.4%
<b>Third Quarter (17-20 Comp)</b>	73	41.5%
<b>Bottom Quarter (1-16 Comp)</b>	24	13.6%
<b>Average ACT Composite</b>		21