

Boise State University
10th Day Profile of New Academic Transfer Students
Spring 2009

Note: This profile reflects the statistics for new, degree-seeking, academic transfer students. The following groups are excluded from the cohort: nondegree-seeking, Bridge, and second undergraduate.

Yield Statistics

| | Number | Percent |
|------------------------------|---------------|---------------------------|
| New Transfer Apps | 791 | 20.8% of all applications |
| New Transfer Admits | 595 | 75.2% of applicants |
| New Transfer Enrolled | 529 | 88.9% of admits |

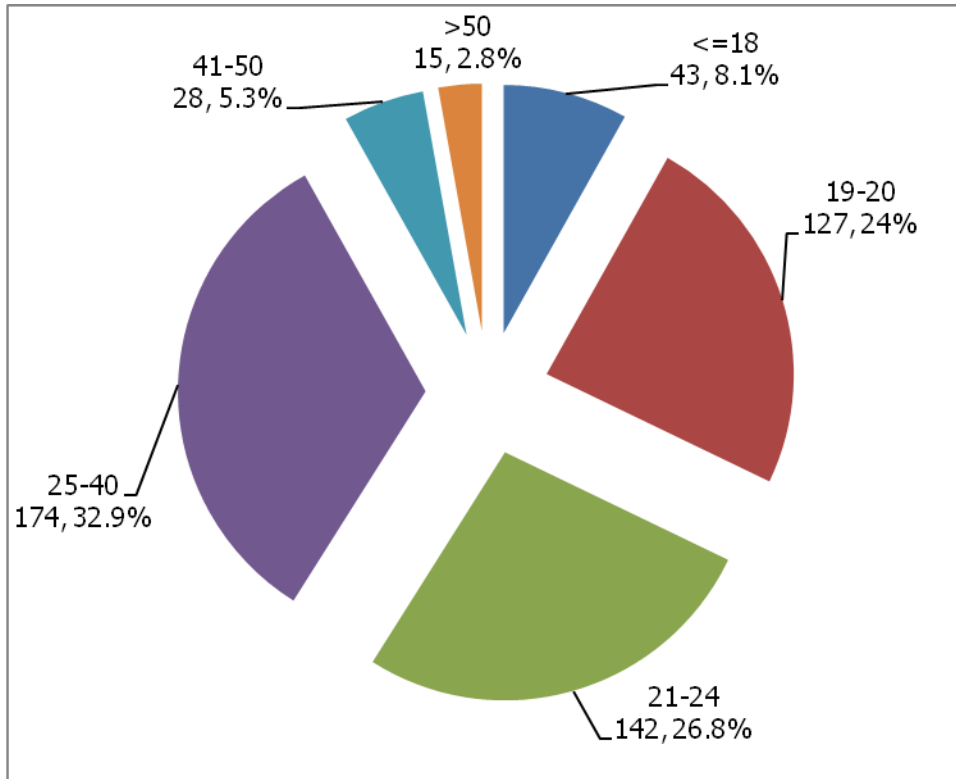
Original Admissions Classification

| | Number | Percent |
|----------------------------|---------------|----------------|
| Conditional/Special | 166 | 31.4% |
| Regular | 333 | 62.9% |
| Provisional | 30 | 5.7% |

Admitted/Enrolled on Probation

| | Number | Percent |
|---------------------------------------|---------------|----------------|
| Academic standing of probation | 56 | 10.6% |

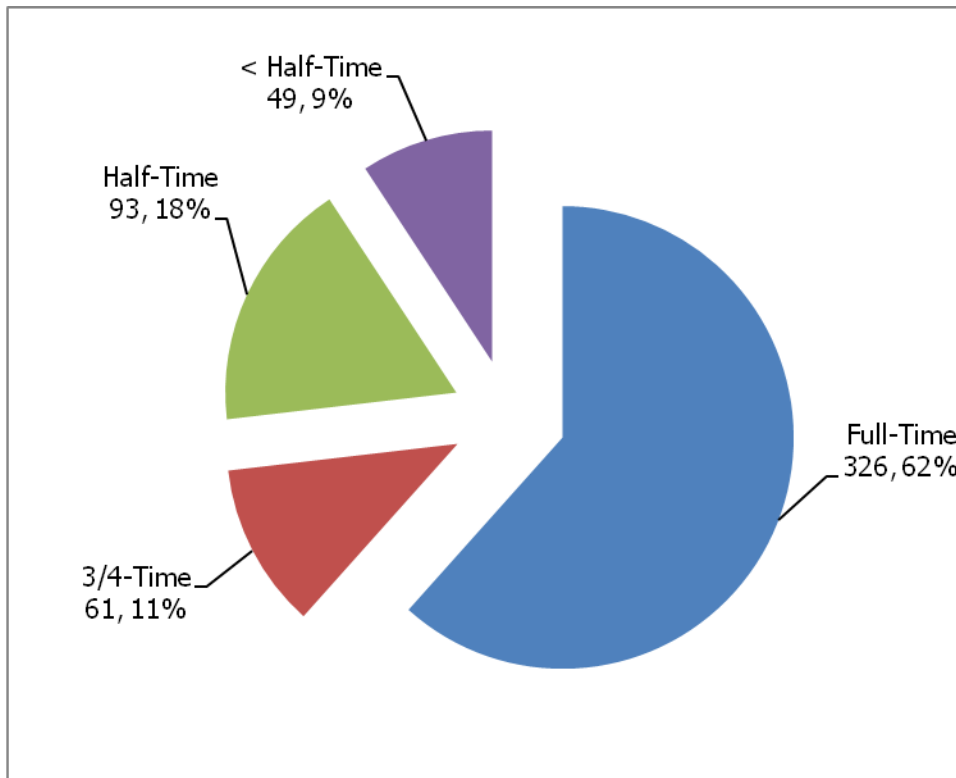
Age



Gender

| | Number | Percent |
|-------------------|--------|---------|
| Female | 285 | 53.8% |
| Male | 234 | 44.4% |
| Undeclared | 10 | 1.8% |

Credit Load



Ethnicity

| | Number | Percent |
|--|--------|---------|
| Asian | 16 | 3.0% |
| Black/African American | 9 | 1.7% |
| Hispanic/Latino | 31 | 5.9% |
| American Indian/Alaska Native | 7 | 1.3% |
| Native Hawaiian/Other Pacific Islander | 2 | 0.4% |
| White | 425 | 80.3% |
| Not Specified | 39 | 7.4% |

Citizenship

| | Number | Percent |
|--------------------|--------|---------|
| International | 14 | 2.6% |
| Permanent Resident | 12 | 2.3% |
| US Citizen | 503 | 95.1% |

Top Countries (from country of citizenship)

| | Number | Percent |
|---|---------------|----------------|
| United States | 515 | 97.4% |
| Saudi Arabia | 6 | 1.1% |
| France | 2 | 0.4% |
| Uganda | 1 | 0.2% |
| THA | 1 | 0.2% |
| KWT | 1 | 0.2% |
| Korea | 1 | 0.2% |
| Kenya | 1 | 0.2% |
| BIH | 1 | 0.2% |
| <i>Total Countries Represented</i> | 9 | |

Resident/Nonresident

| | Number | Percent |
|--------------------|---------------|----------------|
| Resident | 439 | 83% |
| Nonresident | 90 | 17% |

Below are the states sending the largest numbers of new Degree-Seeking transfer students. This is based on the last college attended entered on the education pages.

State

| | Number | Percent |
|-------------------|---------------|----------------|
| Idaho | 197 | 37.2% |
| California | 64 | 12.1% |
| Oregon | 56 | 10.6% |
| Washington | 36 | 6.8% |
| Arizona | 24 | 4.5% |
| Utah | 18 | 3.4% |
| Nevada | 16 | 3.0% |
| Colorado | 12 | 2.3% |
| Texas | 9 | 1.7% |

Colleges/Universities sending largest numbers of new transfer students- Degree-seeking

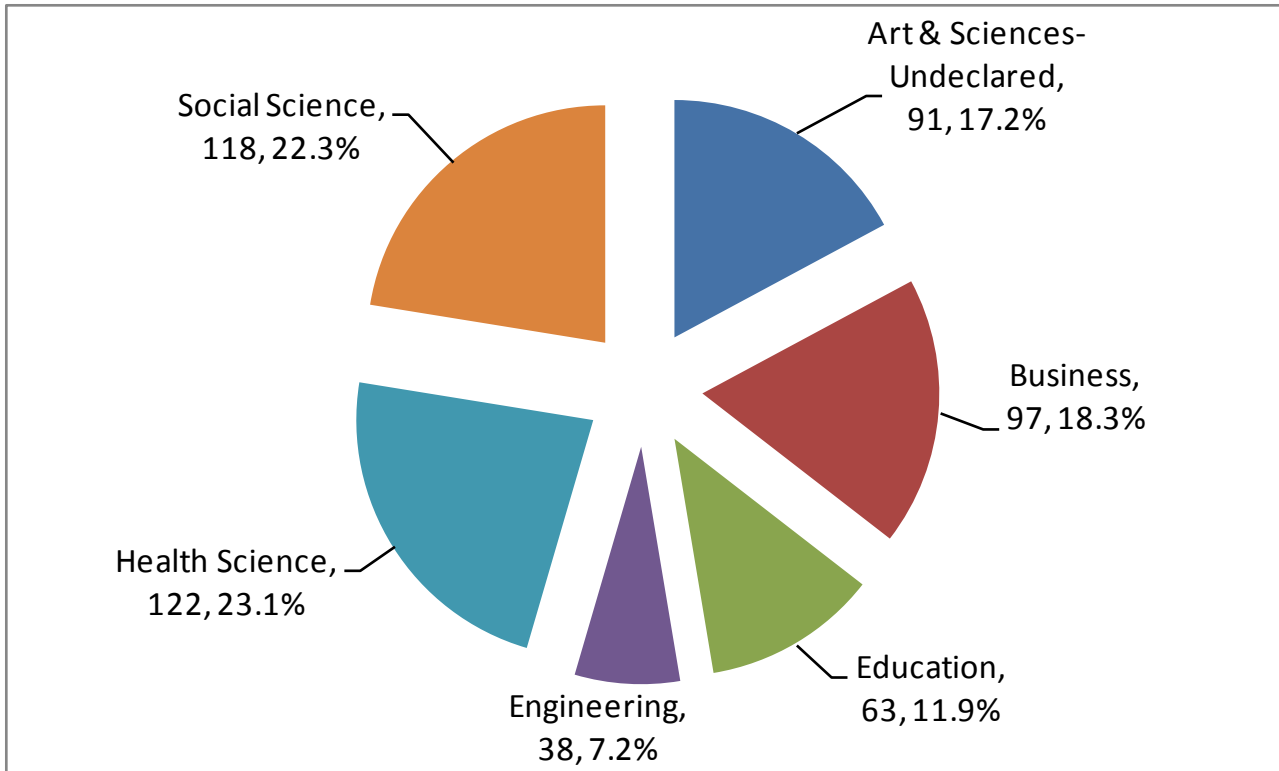
College/University

| | Number | Percent |
|--|---------------|----------------|
| College of Southern Idaho | 65 | 12.3% |
| University of Idaho | 41 | 7.8% |
| Idaho State University | 36 | 6.8% |
| Treasure Valley Community College | 19 | 3.6% |
| Brigham Young University-Idaho | 15 | 2.8% |
| North Idaho College | 15 | 2.8% |
| University of Phoenix | 9 | 1.7% |
| College of Idaho | 8 | 1.5% |
| Community College of So. Nevada | 6 | 1.1% |
| Eastern Oregon University | 6 | 1.1% |
| Lewis-Clark State College | 6 | 1.1% |
| University of Oregon | 6 | 1.1% |
| Eastern Idaho Technical College | 5 | 0.9% |
| Northwest Nazarene University | 5 | 0.9% |

GPA of Last School Attended for Degree-Seeking (Not a cumulative GPA of all transfer institutions – just last attended)

| | Number | Percent |
|----------------------------------|---------------|----------------|
| >=3.5 | 80 | 18.8% |
| 3.0-3.49 | 123 | 28.9% |
| 2.5-2.99 | 99 | 23.2% |
| 2.0-2.49 | 100 | 23.5% |
| <2.0 | 52 | 12.2% |
| | | |
| Average GPA (last school) | 2.83 | |

College of Major



Top Majors

| | Number | Percent |
|--|--------|---------|
| Pre-Nursing | 43 | 8.1% |
| Arts & Science-Undeclared | 29 | 5.5% |
| Social Work | 25 | 4.7% |
| Elementary Education | 24 | 4.5% |
| Psychology | 22 | 4.2% |
| Health Science Studies | 21 | 4.0% |
| Business & Economics-Undeclared | 20 | 3.8% |
| Criminal Justice Administration | 20 | 3.8% |
| Accounting | 17 | 3.2% |
| General Business Management | 16 | 3.0% |
| Pre-Respiratory Therapy | 13 | 2.5% |
| Communications | 12 | 2.3% |
| Biology | 11 | 2.1% |
| Electrical Engineering | 11 | 2.1% |