

Boise State University

10th Day Enrollment Profile**Fall 2002****Overall Enrollment****Total Enrolled**

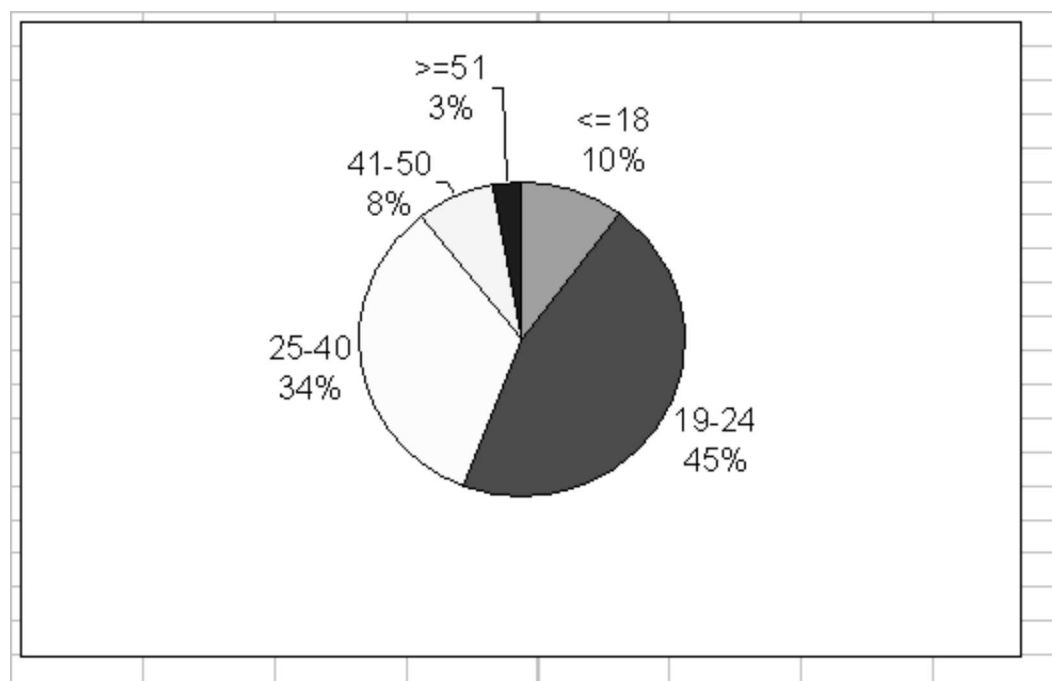
	Number	Percent
Total Students	17,714	100%
Total Credit Hours	188,816	100%
Total FTE	12,737	100%

Career (varies from SBOE definition of these categories)

	Number	Percent
Undergraduate	14,684	83%
Graduate	1,812	10%
Applied Tech	1,218	7%

Gender

	Number	Percent
Female	9,782	55%
Male	7,931	45%
Undeclared	1	0%

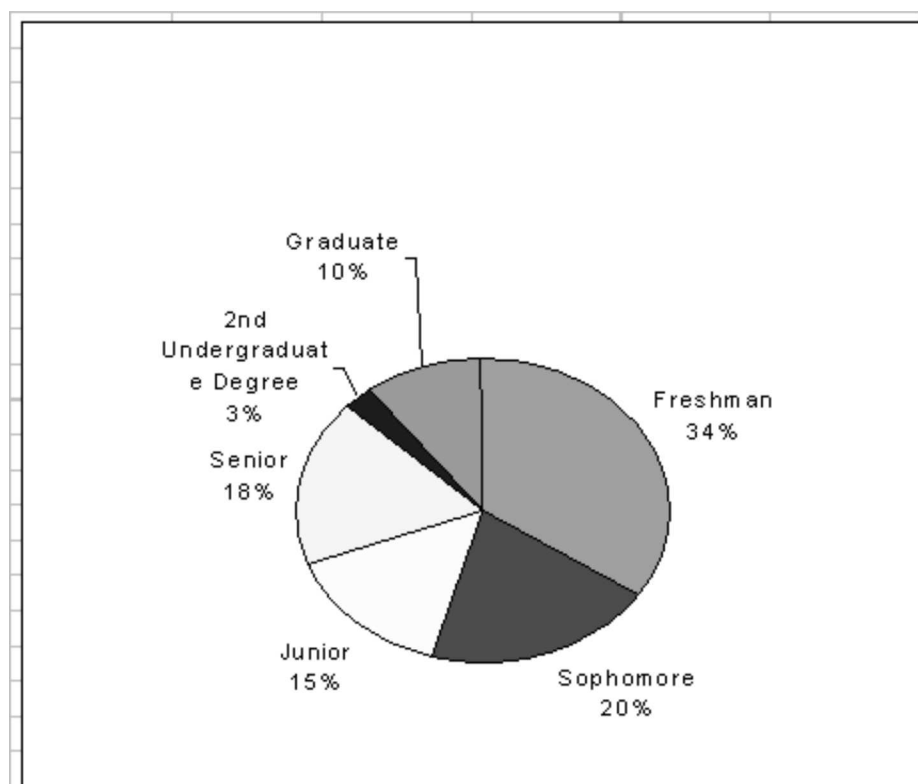
Age

Ethnicity

	Number	Percent
White	14,666	82.8%
Hispanic	910	5.1%
Asian American	465	2.6%
Black/African American	200	1.1%
Native American	170	1.0%
Did Not Respond	1,227	7.4%

Citizenship

	Number	Percent
International	284	1.6%
Permanent Resident	459	2.4%
US Citizen	16,971	95.8%



Class Level

Resident/Nonresident

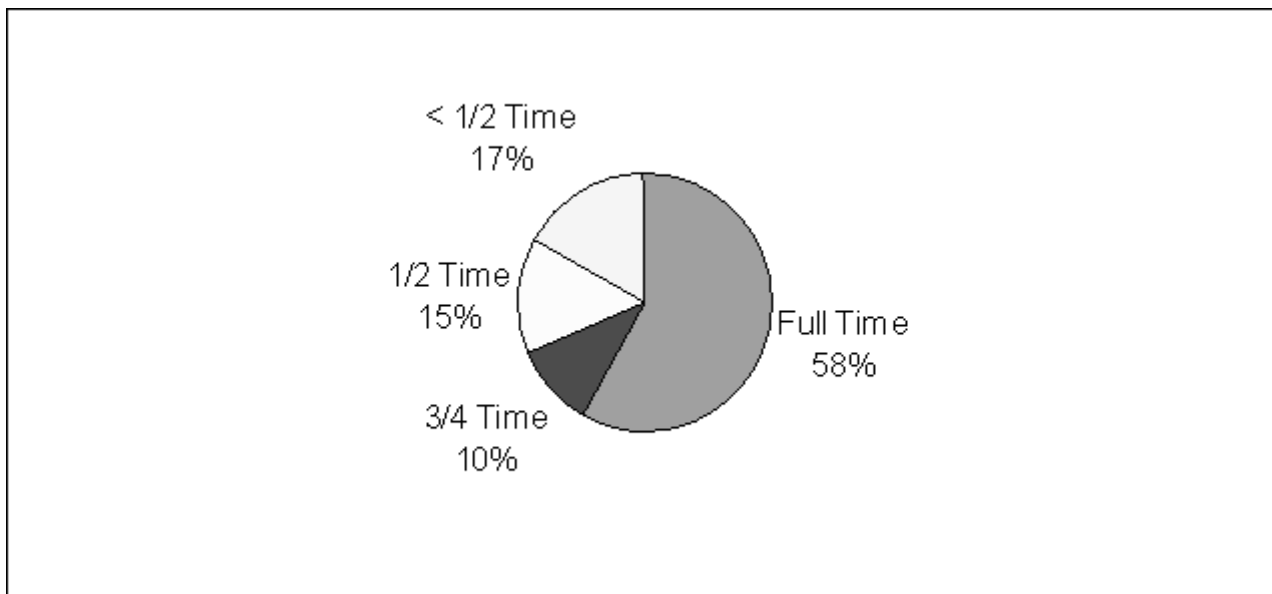
	Number	Percent
Nonresident	1,460	8.2%
Resident	16,254	91.8%

Top States (from original permanent address)

	Number	Percent
Idaho	15,850	89.5%

Oregon	327	1.9%
California	233	1.3%
Washington	213	1.2%
Nevada	130	<1.0%
Montana	104	<1.0%
Utah	74	<1.0%
Texas	57	<1.0%
Alaska	47	<1.0%
Wyoming	42	<1.0%
Colorado	38	<1.0%
Arizona	38	<1.0%
Total US States Represented	50	100%

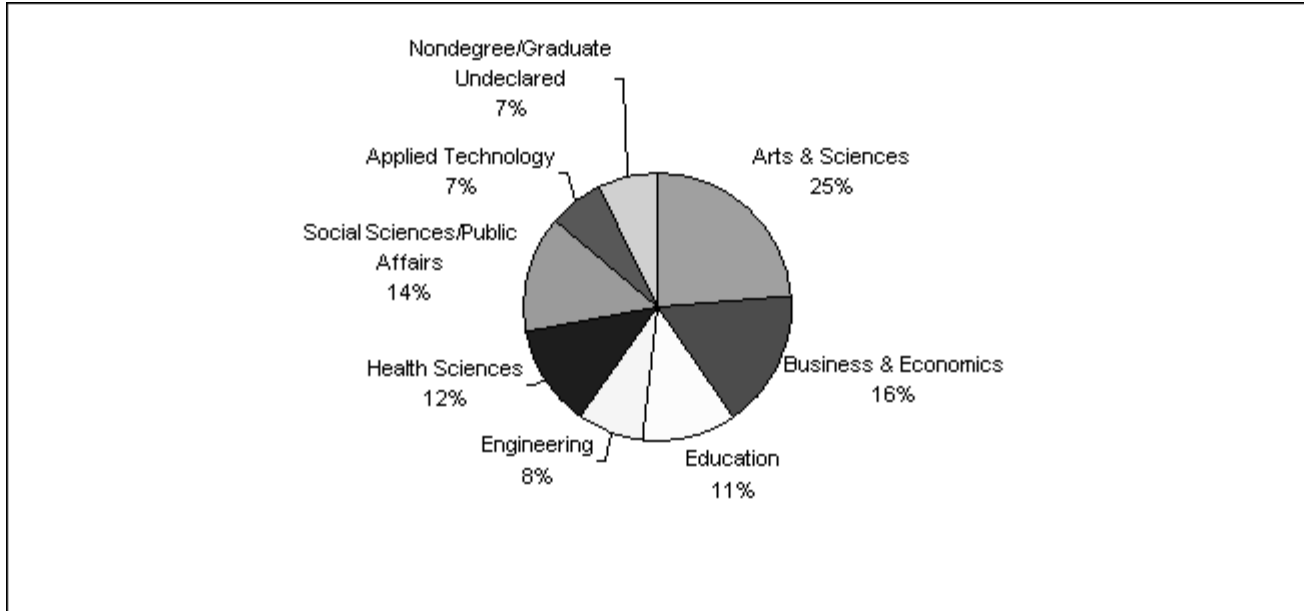
Credit Load



Attendance Status

	Number	Percent
Incoming Undergraduate		
New Freshman	2,148	12.1%
Transfer	1,081	6.1%
Transfer Readmit	212	1.2%
Readmit	1,183	6.7%
2nd Undergraduate	113	<1%
Concurrent HS	13	<1%
Continuing Undergraduate		
Continuing	9,557	54.0%
Continuing 2nd UG	383	2.2%
Continuing Conc. HS	5	<1%

Incoming Applied Tech	580	3.3%
Continuing Applied Tech	638	3.6%
Incoming Graduate	506	2.2%
Continuing Graduate	1,306	7.4%



College

Top Cities (from original permanent address)

	Number	Percent
Boise	8,175	46%
Nampa	1,287	7%
Meridian	1,105	6%
Caldwell	686	4%
Eagle	401	2%
Mountain Home	293	2%
Idaho Falls	287	2%
Kuna	281	2%
Twin Falls	237	1%
Emmett	217	1%
Pocatello	139	<1%
Middleton	107	<1%
Rexburg	93	<1%
Burley	92	<1%
Jerome	82	<1%
Star	81	<1%
Rupert	72	<1%
Payette	60	<1%

McCall	53	<1%
Fruitland	47	<1%
Hailey	42	<1%
Elko	41	<1%
Ontario	38	<1%
Mountain Home AFB	26	<1%

Headcount at Campus Location

	Number	Percent
Boise	15,992	
Canyon County	1,657	
Electronic Campus	1,556	
<i>Internet-Related</i>	985	
<i>Telecourse</i>	240	
<i>Cable TV</i>	215	
Gowen Field	932	
Mountain Home AFB	188	
Micron	129	
Twin Falls	121	
St. Alphonsus	59	
Mountain Home High School	35	
Capital High School	0	

Credits Generated at Campus Location

	Number	Percent
Boise	164,864	87.3%
Canyon County	9,472	5%
Electronic Campus	6,243	3.3%
<i>Internet-Related</i>	4,614	
<i>Telecourse</i>	802	
<i>Cable TV</i>	780	
Gowen Field	3,113	1.7%
Mountain Home AFB	921	>1.0%
Telecourse	802	<1.0%
Cable TV	780	<1.0%
Twin Falls	636	>1.0%
Micron	486	<1.0%
Mountain Home High School	220	<1.0%
St. Alphonsus	112	<1.0%
Capital High School	0	>1.0%