

# Boise State University Census Day Enrollment Profile SPRING 2013

## *Overall Enrollment*

### Total Enrollment

	Number
Total Students	19,873
Total Credit Hours	214,494
Total FTE	14,565

### Career (varies from SBOE definition of these categories)

	Number	Percent
Undergraduate	16,830	85%
Graduate	3,043	15%

### Gender

	Number	Percent
Female	10,616	53.4%
Male	9,109	45.8%
Undeclared	148	0.7%

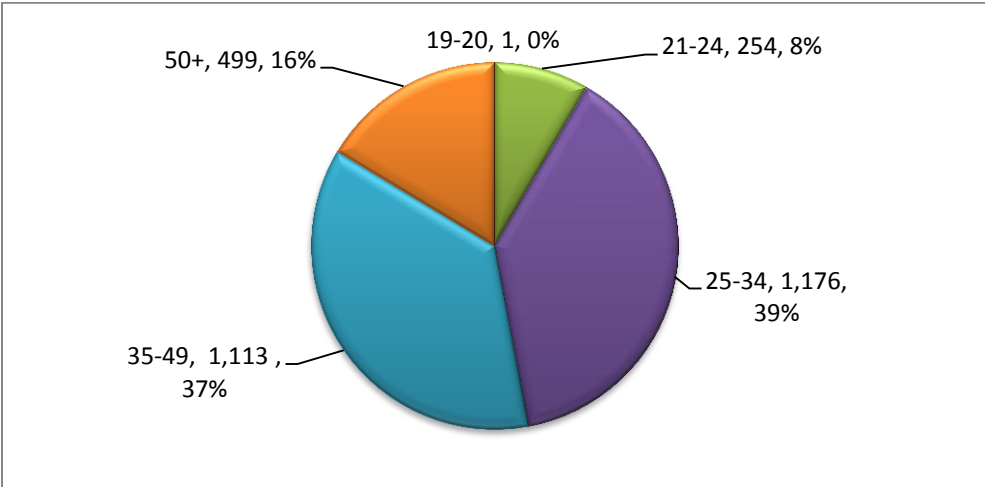
### Average Age

Group	Overall	Degree Seeking	Non-Degree Seeking
Undergraduate	25.41	25.58	22.22
Graduate	37.47	34.90	42.46
<i>Total Average Age</i>	27.25	26.63	33.12

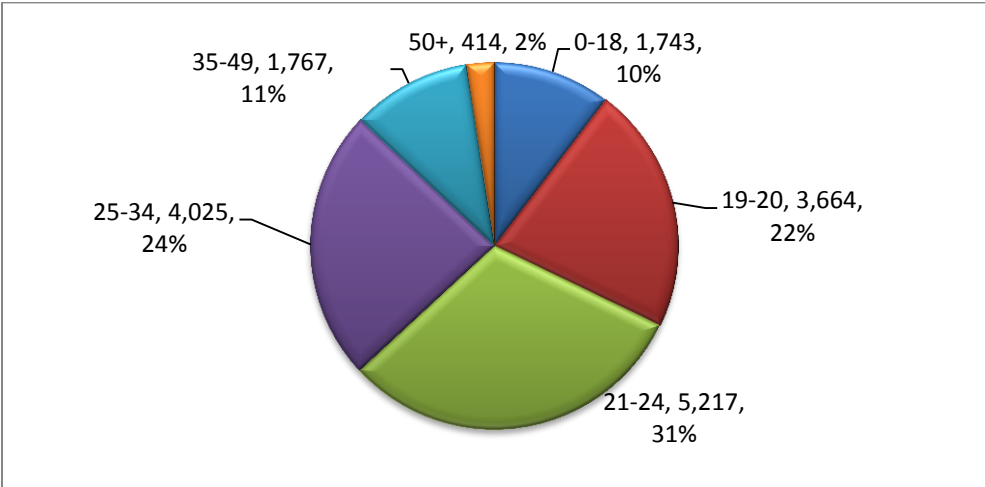
### Degree vs. Nondegree Seeking

	Number	Percent
Undergraduate Degree Seeking	15,942	80.2%
Undergraduate Nondegree Seeking	888	4.5%
Graduate Degree Seeking	2,008	10.1%
Graduate Nondegree Seeking	1,035	5.2%

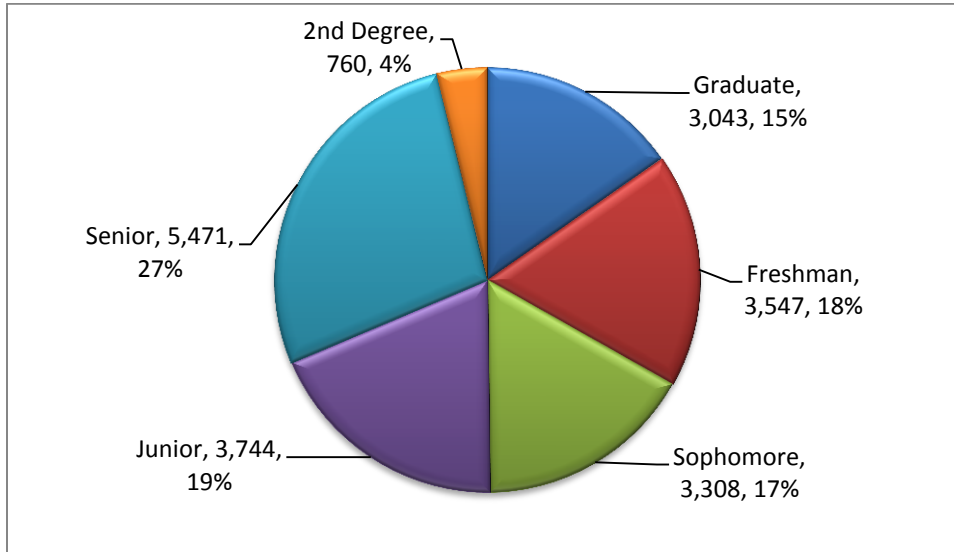
### Graduate Age Distribution



### Undergraduate Age Distribution



## Class Level



## Ethnicity

	Undergraduate	Graduate	Total
American Indian/Alaska Native	144 (0.9%)	21 (0.7%)	165 (0.8%)
Asian	474 (2.8%)	82 (2.7%)	556 (2.8%)
Black/African American	277 (1.6%)	50 (1.6%)	327 (1.6%)
Hispanic of any Race	1,400 (8.3%)	114 (3.8%)	1,514 (7.6%)
Native Hawaiian/Other Pacific Islander	84 (0.5%)	3 (0.1%)	87 (0.4%)
Race and Ethnicity Unknown	1,147 (6.8%)	473 (15.5%)	1,620 (8.2%)
Two or More Races	351 (2.1%)	16 (0.5%)	367 (1.9%)
White	12,953 (77.0%)	2,284 (75.1%)	15,237 (76.7%)
<b>Grand Total</b>	<b>16,830 (100.0%)</b>	<b>3,043 (100.0%)</b>	<b>19,873 (100.0%)</b>

\*Note: Students were resurveyed for ethnicity in August 2010.

## Citizenship

	Undergraduate		Graduate		Total	
	Number	Percentage	Number	Percentage	Number	Percentage
International	606	3.6%	108	3.5%	714	3.6%
Non-US Citizen/Perm Resident	327	1.9%	60	2.0%	387	1.9%
US Citizen (1)	15,897	94.5%	2,875	94.5%	18,772	94.5%
<b>Grand Total</b>	<b>16,830</b>	<b>100%</b>	<b>3,043</b>	<b>100%</b>	<b>19,873</b>	<b>100%</b>

### Idaho Resident/Nonresident (based on official residency classification)

	Undergraduate	Graduate	Total
Non Resident	3,300 (19.6%)	810 (26.6%)	4,110 (20.7%)
Resident	13,530 (80.4%)	2,233 (73.4%)	15,763 (79.3%)
<b>Grand Total</b>	<b>16,830 (100%)</b>	<b>3,043 (100%)</b>	<b>19,873 (100%)</b>

### Top States (from original permanent address)

STATE	Undergraduate	Graduate	Total
Idaho	12,686 (75.4%)	2,139 (70.3%)	14,825 (74.6%)
California	1,140 (6.8%)	101 (3.3%)	1,241 (6.2%)
Washington	685 (4.1%)	79 (2.6%)	764 (3.8%)
Oregon	484 (2.9%)	63 (2.1%)	547 (2.8%)
Nevada	244 (1.4%)	28 (0.9%)	272 (1.4%)
Alaska	124 (0.7%)	8 (0.3%)	132 (0.7%)
Colorado	115 (0.7%)	17 (0.6%)	132 (0.7%)
Montana	100 (0.6%)	16 (0.5%)	116 (0.6%)
Utah	87 (0.5%)	27 (0.9%)	114 (0.6%)
Texas	80 (0.5%)	29 (1.0%)	109 (0.5%)
Arizona	70 (0.4%)	28 (0.9%)	98 (0.5%)
Hawaii	60 (0.4%)	12 (0.4%)	72 (0.4%)
Florida	44 (0.3%)	21 (0.7%)	65 (0.3%)
Pennsylvania	30 (0.2%)	33 (1.1%)	63 (0.3%)
Illinois	39 (0.2%)	21 (0.7%)	60 (0.3%)
Virginia	33 (0.2%)	21 (0.7%)	54 (0.3%)
Ohio	25 (0.1%)	26 (0.9%)	51 (0.3%)
Wyoming	38 (0.2%)	13 (0.4%)	51 (0.3%)
Total States Represented	50		

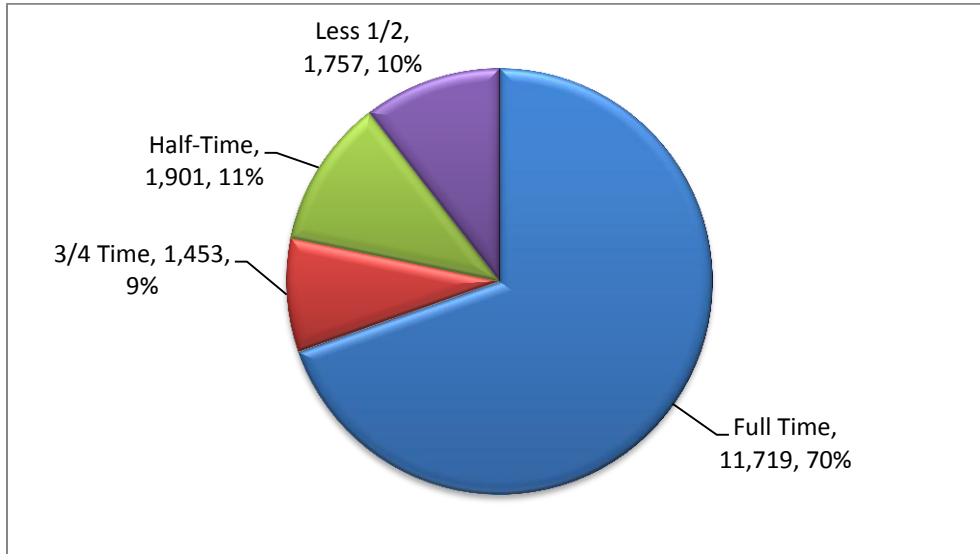
## Top Countries (from citizenship)

Country	Total	Percentage
United States	18,679	94.0%
Saudi Arabia	336	1.7%
Kuwait	98	0.5%
Canada	43	0.2%
China	36	0.2%
India	28	0.1%
Nepal	20	0.1%
Korea, Republic of	19	0.1%

## Top Cities (from original permanent address)

	Total	Undergraduate	Graduate
Boise	6,563 (33.0%)	5,512 (32.8%)	1,051 (34.5%)
Meridian	1,580 (8.0%)	1,389 (8.3%)	191 (6.3%)
Nampa	1,159 (5.8%)	1,039 (6.2%)	120 (3.9%)
Eagle	571 (2.9%)	519 (3.1%)	52 (1.7%)
Caldwell	492 (2.5%)	424 (2.5%)	68 (2.2%)
Mountain Home	480 (2.4%)	444 (2.6%)	36 (1.2%)
Idaho Falls	332 (1.7%)	296 (1.8%)	36 (1.2%)
Twin Falls	320 (1.6%)	270 (1.6%)	50 (1.6%)
Kuna	274 (1.4%)	237 (1.4%)	37 (1.2%)
Emmett	177 (0.9%)	160 (1.0%)	17 (0.6%)
Pocatello	134 (0.7%)	112 (0.7%)	22 (0.7%)
Coeur d Alene	126 (0.6%)	103 (0.6%)	23 (0.8%)
Star	122 (0.6%)	106 (0.6%)	16 (0.5%)
Jerome	109 (0.5%)	92 (0.5%)	17 (0.6%)
Middleton	92 (0.5%)	76 (0.5%)	16 (0.5%)
Hailey	91 (0.5%)	88 (0.5%)	3 (0.1%)
Fruitland	82 (0.4%)	71 (0.4%)	11 (0.4%)
Lewiston	73 (0.4%)	45 (0.3%)	28 (0.9%)
Weiser	73 (0.4%)	63 (0.4%)	10 (0.3%)
Burley	70 (0.4%)	66 (0.4%)	4 (0.1%)
Sandpoint	63 (0.3%)	55 (0.3%)	8 (0.3%)
Post Falls	62 (0.3%)	49 (0.3%)	13 (0.4%)
Las Vegas	62 (0.3%)	53 (0.3%)	9 (0.3%)
Spokane	62 (0.3%)	48 (0.3%)	14 (0.5%)

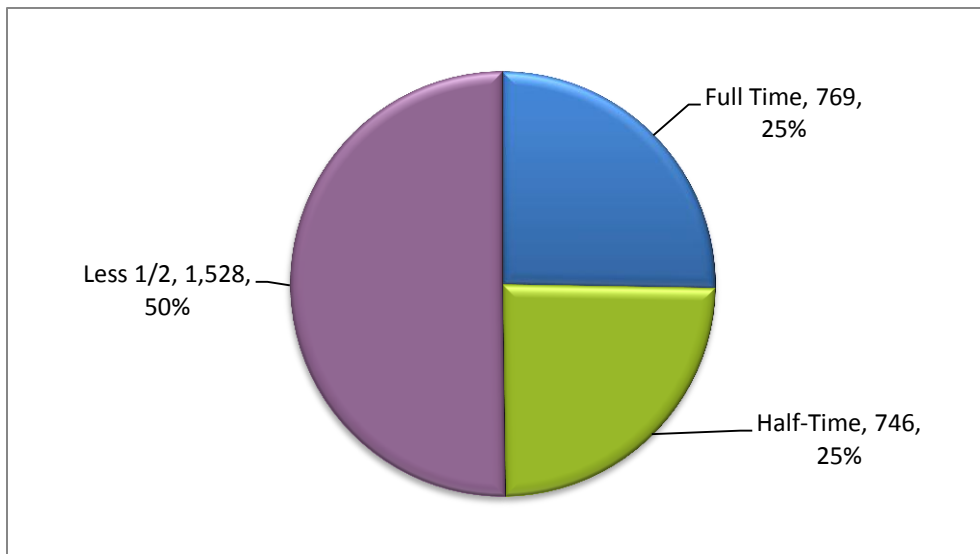
### Credit Load – Undergraduate



### Undergraduate Enrollment Status

Full Time: 12+  
3/4 Time: 9 to 11  
1/2 Time: 6 to 8  
< 1/2 Time: 5 or less  
No units into <1/2 time

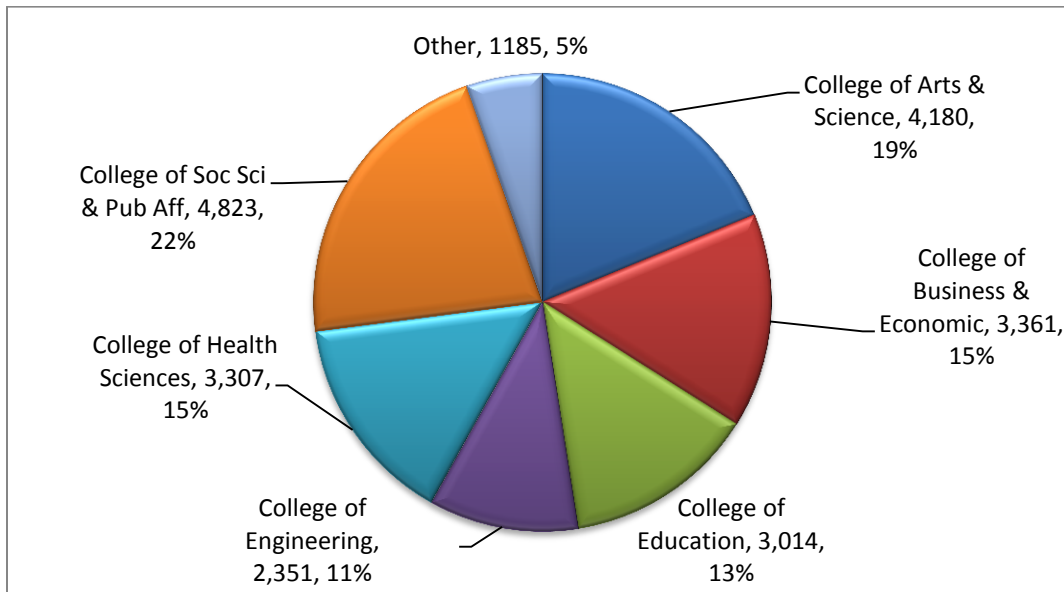
### Credit Load – Graduate



### Graduate Enrollment Status

Full Time: 9+  
1/2 Time: 5 to 8  
< 1/2 Time: 4 or less  
No units into <1/2 time

## Enrollment by College



## Headcount at Campus Location (duplicative)

LOCATION	NUMBER
Boise Campus (MAIN)	16,724
Electronic Campus (ELECCAMPUS)	5,701
Meridian Center (MERID CTR)	581
Gowen Field (GOWENF)	502
Schools (SCHOOLS)	206
College of Southern Idaho (TWINFLSCSI)	158
Alaska Center (ALASKA CTR)	112
Micron Technology (MICRON)	85
Mountain Home High School (MTNHOME_HS)	79
Mountain Home Air Force Base (MHAFB)	64
LCSC-Coeur d'Alene (LCSC CDA)	54
LCSC-Lewiston (LCSC LWSTN)	38
Other	102
<b>Grand Total</b>	<b>24,406</b>

## Credits Generated at Campus Location

LOCATION	CREDITS
Boise Campus (MAIN)	178,876
Electronic Campus (ELECCAMPUS)	25,356
Meridian Center (MERID CTR)	2,068
Gowen Field (GOWENF)	1,827
Schools (SCHOOLS)	1,595
College of Southern Idaho (TWINFLSCSI)	1,060
LCSC-Coeur d'Alene (LCSC CDA)	634
LCSC-Lewiston (LCSC LWSTN)	440
Mountain Home High School (MTNHOME_HS)	301
Micron Technology (MICRON)	279
Idaho Digital Learning Academy (ID DIGITAL)	243
Mountain Home Air Force Base (MHAFB)	237
Other	1,578
<b>Grand Total</b>	<b>214,494</b>