

**Boise State University**  
**10<sup>th</sup> Day Profile of New Academic Freshmen**  
**Fall 2007**

**Notes:** This profile reflects the statistics for the cohort of first-time, degree-seeking, academic students, including new freshmen who completed university courses while in high school. The following groups are excluded from the cohort: non degree-seeking, concurrent high school, Bridge, second undergraduate degree and new students who started in summer 2007. Applications, admits and denied data is the exception and is based on admit type.

**Yield Statistics**

	<b>Number</b>	<b>Percent</b>
<b>New Freshmen Apps</b>	5132	48.9% of all applicants
<b>New Freshmen Admits</b>	3014	59% of freshman applicants
<b>New Freshmen Enrolled</b>	2280	76% of freshman admits

**Original Admission Classification**

	<b>Number</b>	<b>Percent</b>
<b>Admitted with in-progress or unofficial documents</b>	1595	70%
<b>Admitted with final documents</b>	356	16%
<b>Admitted with final documents with Provisions</b>	329	14%

**Denied Admission**

	<b>Number</b>	<b>Percent</b>
<b>Originally Denied</b>	807	15.7% of freshman applicants
<b>Petitions Approved (included in Degree-seeking number)*</b>	15	2% of denied
<b>Admitted as Degree-seeking (includes petitions and director's discretion)**</b>	128	16% of denied
<b>Bridge***</b>	41	5% of denied
<b>Changed to Nondegree****</b>	165	20.4% of denied
<b>Remain Denied</b>	473	58.6% of denied

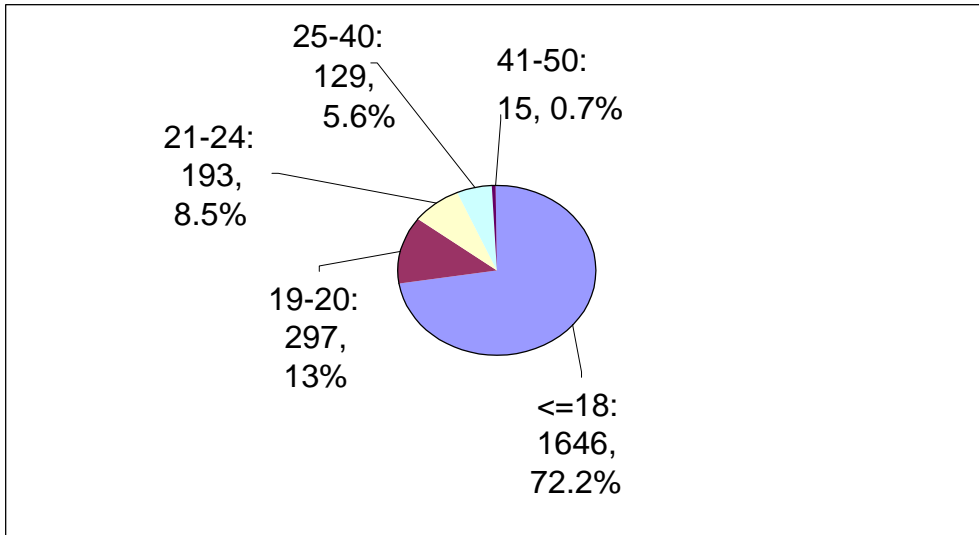
\* Of the petitioners accepted as degree-seeking 15, or 100% enrolled.

\*\* Of the students admitted as degree-seeking 88, or 69% enrolled

\*\*\* Of the students admitted as bridge 34, or 83% enrolled.

\*\*\*\* Of the students admitted as nondegree-seeking 130, or 79% enrolled.

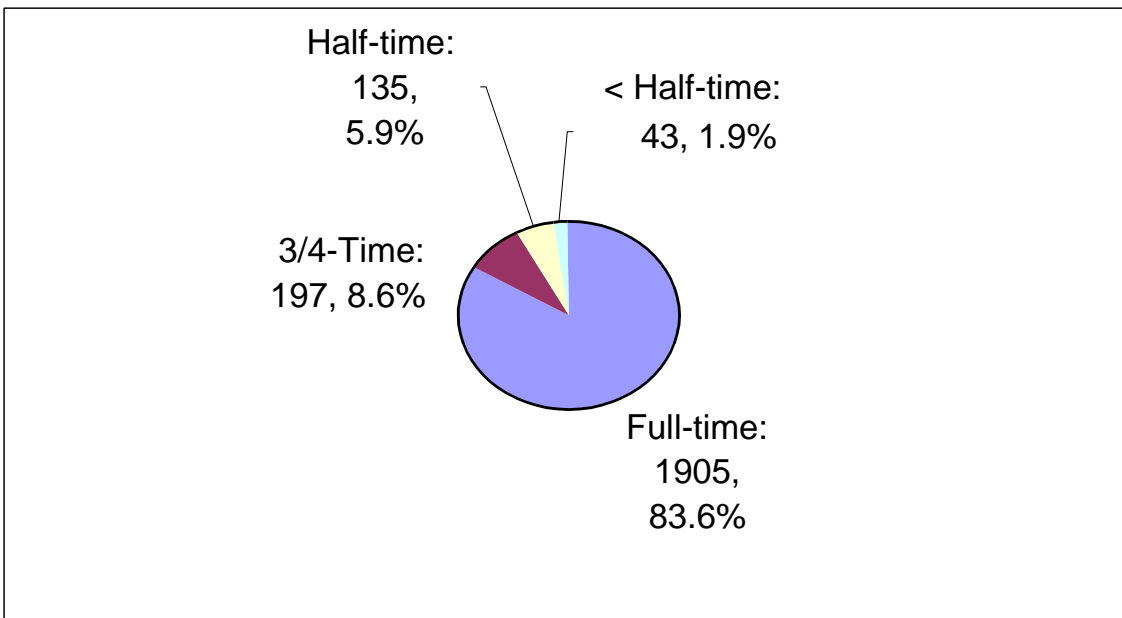
**Age**



**Gender**

	Number	Percent
Female	1263	55.4%
Male	1005	44.1%
Undeclared	12	.5%

**Credit Load**



**Ethnicity**

	<b>Number</b>	<b>Percent</b>
<b>Asian American</b>	91	4%
<b>Black/African American</b>	38	1.7%
<b>Hispanic</b>	174	7.6%
<b>Native American</b>	34	1.5%
<b>White</b>	1832	80.3%
<b>Did Not Respond</b>	111	4.9%

**Citizenship**

	<b>Number</b>	<b>Percent</b>
<b>International</b>	24	1.1%
<b>Permanent Resident</b>	63	2.8%
<b>US Citizen</b>	2187	95.9%
<b>Not Indicated</b>	6	.2%

**Top Countries (from country of citizenship)**

	<b>Number</b>	<b>Percent</b>
<b>1. United States of America</b>	2250	98.7%
<b>2. Mexico</b>	6	.3%
<b>2. Japan</b>	6	.3%
<b>4. Saudi Arabia</b>	4	.2%
<b>5. Australia</b>	3	.1%
<b>5. Canada</b>	3	.1%
<b>5. France</b>	2	<.1%
<b>8. Austria</b>	1	<.1%
<b>8. Denmark</b>	1	<.1%
<b>8. Great Britain</b>	1	<.1%
<b>8. India</b>	1	<.1%
<b>8. Russia</b>	1	<.1%
<b>8. Taiwan, Republic of China</b>	1	<.1%
<b>Number of Countries Represented</b>	14	

**Resident/Nonresident**

	<b>Number</b>	<b>Percent</b>
<b>Resident</b>	1875	82.2%
<b>Nonresident</b>	405	17.8%

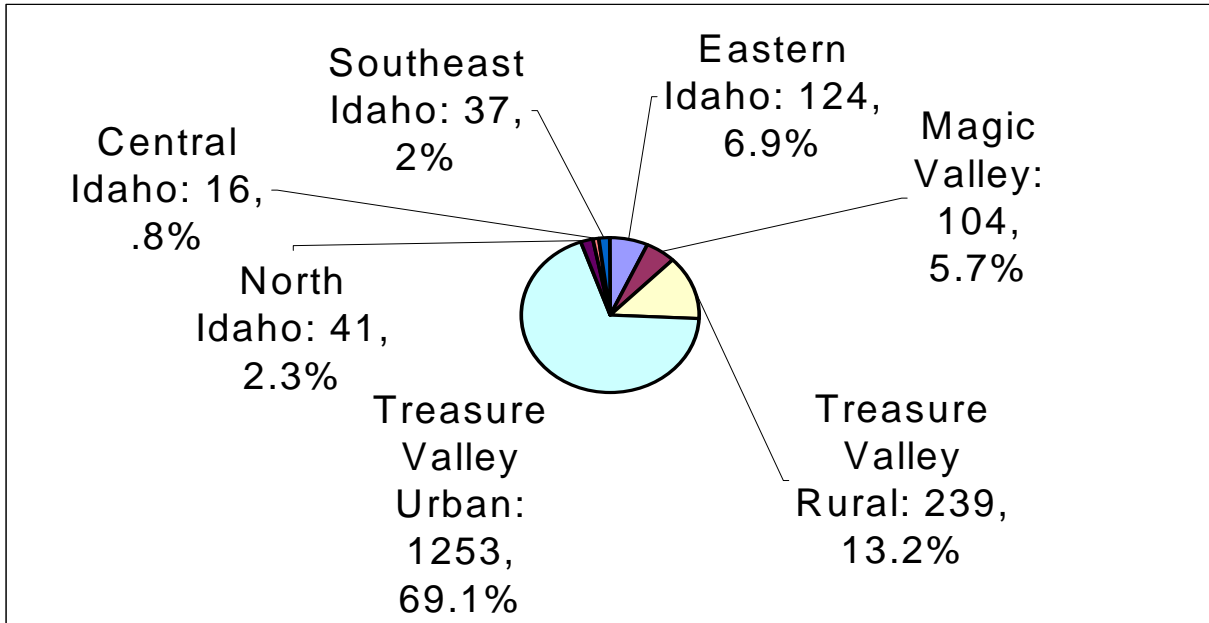
**Top States (from original permanent address)**

	<b>Number</b>	<b>Percent</b>
<b>1. Idaho (1)</b>	1826	80.1%
<b>2. Washington (2)</b>	81	3.6%
<b>3. California (2)</b>	77	3.4%
<b>4. Oregon (4)</b>	76	3.3%
<b>5. Nevada (5)</b>	34	1.5%
<b>6. Montana (6)</b>	22	1.0%
<b>7. Alaska (7)</b>	21	<1%
<b>8. Utah (9)</b>	14	<1%
<b>9. Arizona (8)</b>	9	<1%
<b>10. Texas (10)</b>	8	<1%
<b>11. Colorado (11)</b>	6	<1%
<b>11. Hawaii *</b>	6	<1%
<b>13. Illinois *</b>	4	<1%
<b>13. Ohio *</b>	4	<1%
<b>13. South Dakota *</b>	4	<1%
<b>* not in last year's top 15</b>		
<b>Total US States Represented</b>	39	

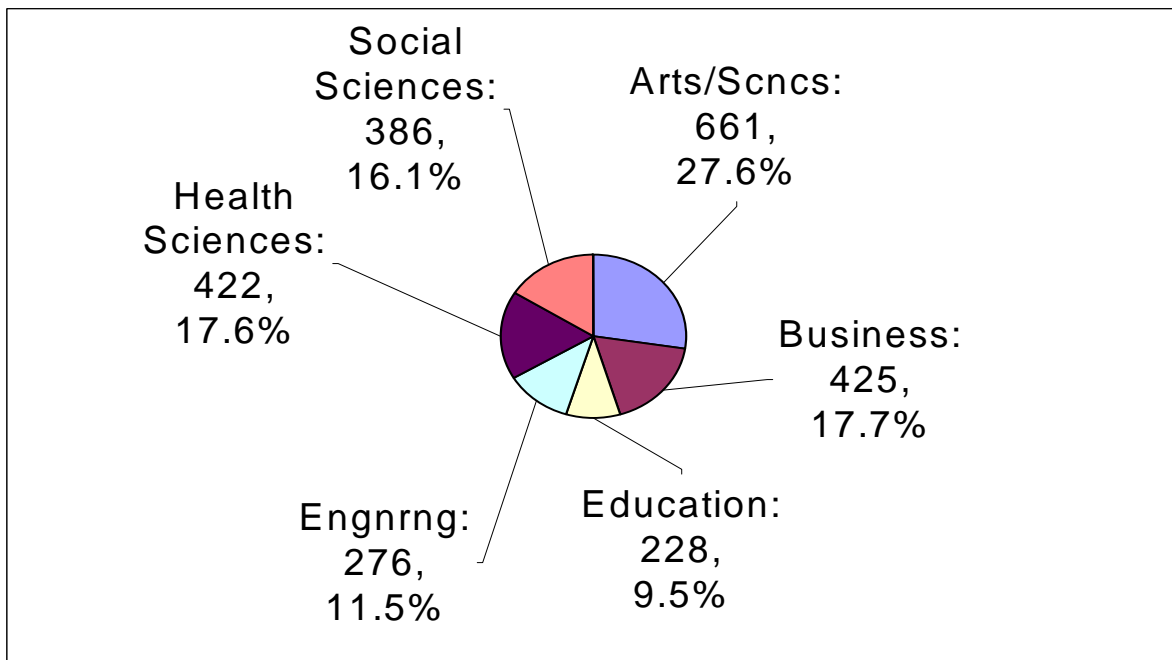
**Top Cities**

	<b>Number</b>	<b>Percent</b>
<b>1. Boise (1)</b>	710	31.1%
<b>2. Meridian (2)</b>	198	8.7%
<b>3. Nampa (3)</b>	174	7.6%
<b>4. Eagle (4)</b>	76	3.3%
<b>5. Caldwell (5)</b>	74	3.2%
<b>6. Idaho Falls (6)</b>	68	3%
<b>7. Kuna (9)</b>	40	1.8%
<b>8. Mountain Home (7)</b>	36	1.6%
<b>9. Emmett (8)</b>	30	1.3%
<b>10. Pocatello (10)</b>	25	1.1%
<b>11. Twin Falls (12)</b>	19	<1%
<b>12. Payette (16)</b>	17	<1%
<b>13. Fruitland (18)</b>	16	<1%
<b>14. Middleton (20)</b>	15	<1%
<b>15. Weiser *</b>	14	<1%
<b>16. Homedale *</b>	12	<1%
<b>17. Jerome *</b>	12	<1%
<b>18. Melba *</b>	12	<1%
<b>* not in last year's top 20</b>		

**Idaho Recruitment Regions:**



**College of Major (Duplicative)**



### Top Majors

	Number	Percent
1. Undecided (1)	259	10.8%
2. Pre-Nursing (2)	141	5.9%
3. Business-Undeclared (3)	103	4.3%
4. Psychology (4)	97	4.1%
5. Pre-Medicine (5)	76	3.2%
6. Business Economics (10)	73	3.1%
7. Elementary Education (9)	69	2.9%
8. Criminal Justice (15)	67	2.8%
9. General Engineering (16)	62	2.6%
9. English General *	62	2.6%
11. Education Undeclared (17)	61	2.5%
12. Music (7)	60	2.5%
12. Political Science (11)	60	2.5%
14. Marketing *	59	2.6%
15. Communication (14)	58	2.4%
15. English Lit/Writing *	58	2.4%
17. Biology (6)	56	2.3%
18. Computer Science (12)	54	2.3%
19. General Business Management (8)	49	2.1%
20. Mechanical Engineering (13)	48	2%
* not in last year's top 20		

### Years From High School

	Number	Percent
Straight from High School	1765	78.3%
1 Year From High School	153	6.8%
2 Years from High School	52	2.3%
3 Years from High School	69	3.1%
4 Years from High School	42	1.8%
5-10 Years from High School	112	5%
More than 10 Years	61	2.7%

### Top High Schools

	Number	Percent
1. Capital (5)	116	5%
2. Mountain View (2)	115	5%
3. Borah (3)	110	4.9%
4. GED Idaho (1)	101	4.5%
5. Centennial (4)	94	4.2%
6. Boise (9)	92	4.1%
7. Eagle (6)	87	3.9%
8. Meridian (6)	80	3.5%
9. Timberline (8)	76	3.4%
10. Skyview (18)	58	2.6%
11. Caldwell (14)	36	1.6%

<i>Top High Schools Continued</i>	<b>Number</b>	<b>Percent</b>
<b>11. Nampa (10)</b>	36	1.6%
<b>13. Kuna (12)</b>	35	1.5%
<b>14. Vallivue (13)</b>	33	1.4%
<b>15. Emmett (14)</b>	30	1.3%
<b>15. Mountain Home (11)</b>	30	1.3%
<b>17. Idaho Falls (17)</b>	29	1.2%
<b>18. Bishop Kelly (16)</b>	28	1.2%
<b>19. Middleton (18)</b>	22	<1%
<b>19. GED *</b>	22	<1%
<b>21. Skyline (19)</b>	21	<1%

### High School GPA

	<b>Number</b>	<b>Percent</b>
<b>4.0</b>	83	4%
<b>&gt;=3.5 (includes 4.0)</b>	721	34.4%
<b>3.0-3.49</b>	854	40.8%
<b>2.5-2.99</b>	428	20.4%
<b>2.0-2.49</b>	77	3.7%
<b>&lt;2.0</b>	15	.7%
<b>Average GPA (straight from high school)</b>		3.30
<b>Average GPA (overall new freshmen)</b>		3.29

### High School Class Rank

	<b>Number</b>	<b>Percent</b>
<b>1<sup>st</sup> (n=44) 2<sup>nd</sup> (n=12) 3<sup>rd</sup> (n=16)</b>	72	4.1%
<b>Top 10% (includes 1<sup>st</sup>, 2<sup>nd</sup>, 3<sup>rd</sup>)</b>	208	12%
<b>Top Quarter (includes top 10%)</b>	624	35.1%
<b>Second Quarter</b>	653	37%
<b>Third Quarter</b>	398	22.3%
<b>Bottom Quarter</b>	102	5.6%
<b>Average Class Rank</b>		63 <sup>nd</sup> percentile

### ACT Scores

	<b>Number</b>	<b>Percent</b>
<b>Top Quarter (24-36 Comp)</b>	501	30%
<b>Second Quarter (21-23 Comp)</b>	510	30.5%
<b>Third Quarter (17-20 Comp)</b>	546	32.7%
<b>Bottom Quarter (1-16 Comp)</b>	115	6.8%
<b>Average ACT Composite</b>		21.8