

**Boise State University**  
**10<sup>th</sup> Day Profile of New Academic Freshmen**  
**Fall 2002**

**Notes:** Includes undergraduate, new degree-seeking and nondegree-seeking; concurrent high school and second undergraduate students are excluded. GPA, high school rank and ACT score information is primarily for degree-seeking students; nondegree-seeking students are not required to provide this information.

**Yield Statistics**

|                              | <b>Number</b> | <b>Percent</b>          |
|------------------------------|---------------|-------------------------|
| <b>New Freshmen Apps</b>     | 4302          | 46% of all applications |
| <b>New Freshmen Admits</b>   | 3636          | 85% of applicants       |
| <b>New Freshmen Enrolled</b> | 2148          | 59% of admits           |

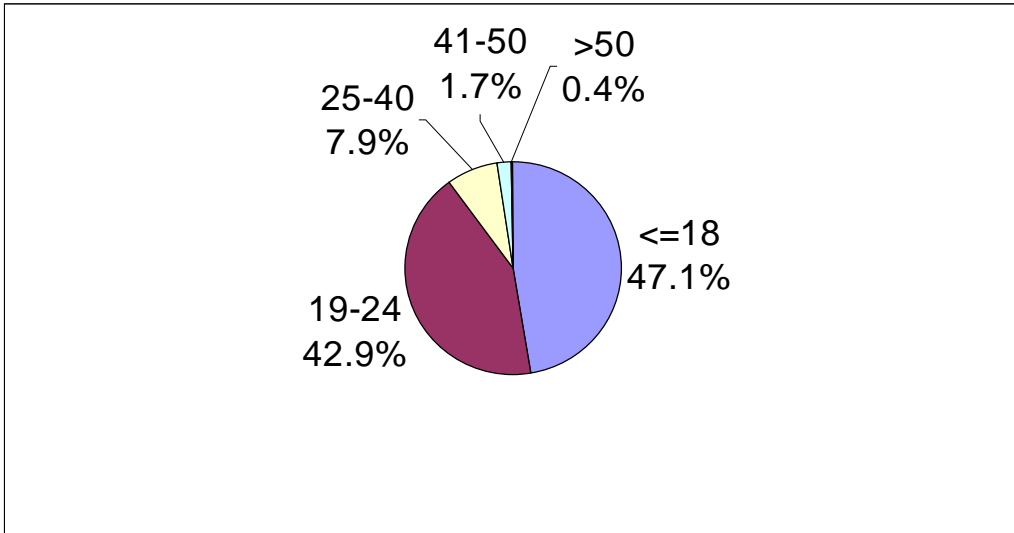
**Original Admissions Classification**

|                            | <b>Number</b> | <b>Percent</b> |
|----------------------------|---------------|----------------|
| <b>Conditional/Special</b> | 1129          | 52.6%          |
| <b>Nondegree</b>           | 324           | 15.1%          |
| <b>Regular</b>             | 351           | 16.3%          |
| <b>Provisional</b>         | 344           | 16%            |

**Denied Admission**

|                                   | <b>Number</b> | <b>Percent</b>     |
|-----------------------------------|---------------|--------------------|
| <b>Originally Denied</b>          | 286           | 6.6% of applicants |
| <b>Petitions Approved</b>         | 22            | 7.7% of denied     |
| <b>Petition Approved – enroll</b> | 17            | 77.3%              |
| <b>Changed to Nondegree</b>       | 96            | 33.6% of denied    |
| <b>Changed to ND –enroll</b>      | 72            | 75%                |
| <b>Remain Denied</b>              | 168           | 58.7%              |

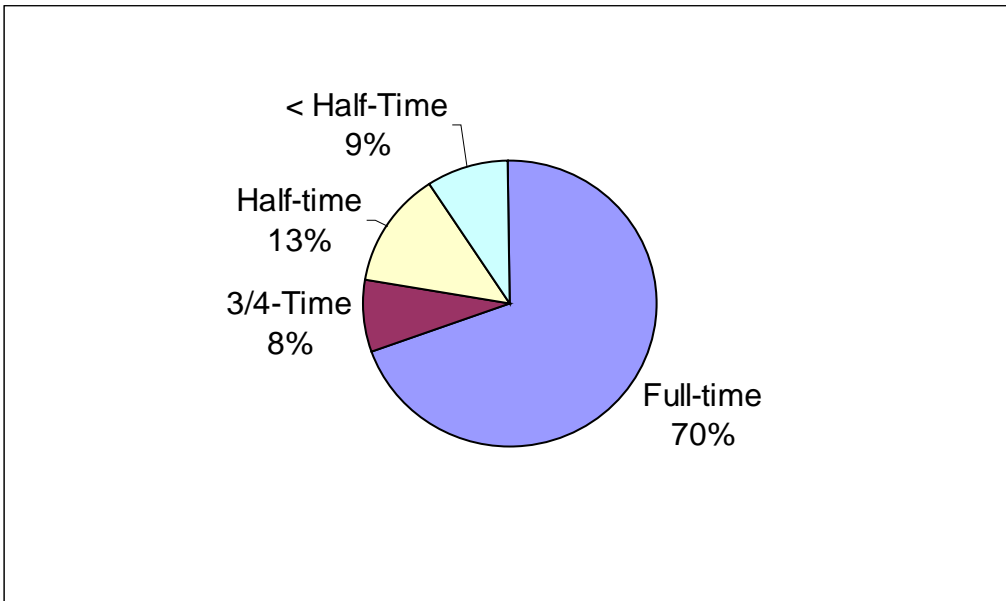
**Age**



**Gender**

|        | Number | Percent |
|--------|--------|---------|
| Female | 1181   | 55%     |
| Male   | 967    | 45%     |

**Credit Load**



**Ethnicity**

|                               | <b>Number</b> | <b>Percent</b> |
|-------------------------------|---------------|----------------|
| <b>Asian American</b>         | 60            | 2.8%           |
| <b>Black/African American</b> | 21            | 1%             |
| <b>Hispanic</b>               | 153           | 7.1%           |
| <b>Native American</b>        | 24            | 1.1%           |
| <b>White</b>                  | 1735          | 80.8%          |
| <b>Did Not Respond</b>        | 155           | 7.2%           |

**Citizenship**

|                           | <b>Number</b> | <b>Percent</b> |
|---------------------------|---------------|----------------|
| <b>International</b>      | 33            | 1.5%           |
| <b>Permanent Resident</b> | 60            | 2.8%           |
| <b>US Citizen</b>         | 2055          | 95.7%          |

**Resident/Nonresident**

|                    | <b>Number</b> | <b>Percent</b> |
|--------------------|---------------|----------------|
| <b>Nonresident</b> | 190           | 8.8%           |
| <b>Resident</b>    | 1958          | 91.2%          |

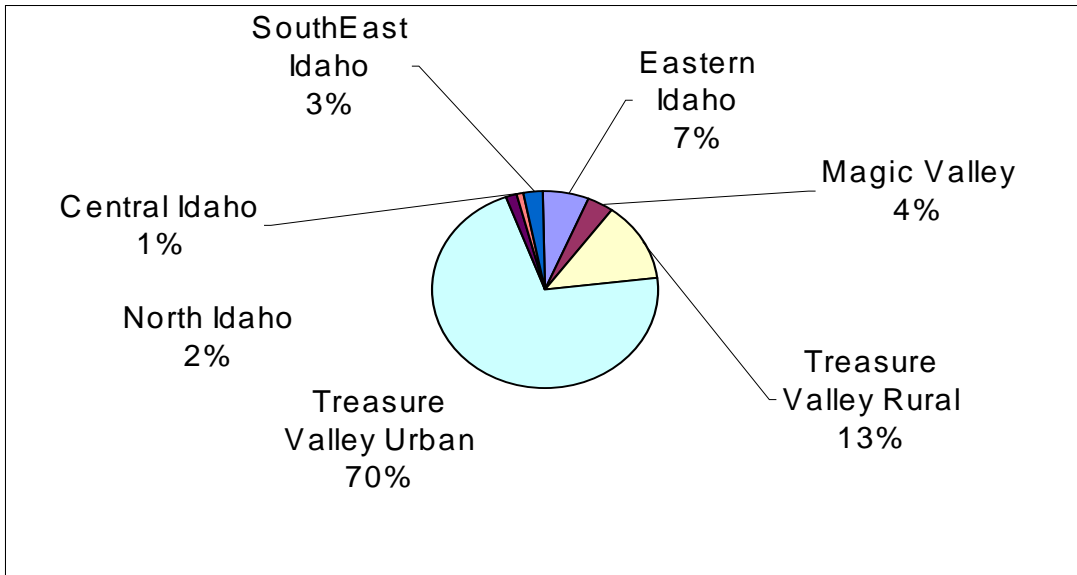
**Top States (from original permanent address)**

|                                    | <b>Number</b> | <b>Percent</b> |
|------------------------------------|---------------|----------------|
| <b>Idaho</b>                       | 1943          | 90.5%          |
| <b>Oregon</b>                      | 46            | 2.14%          |
| <b>California</b>                  | 28            | 1.3%           |
| <b>Washington</b>                  | 26            | 1.2%           |
| <b>Montana</b>                     | 15            | <1.0%          |
| <b>Nevada</b>                      | 9             | <1.0%          |
| <b>Utah</b>                        | 8             | <1.0%          |
| <b>Alaska</b>                      | 6             | <1.0%          |
| <b>Arizona</b>                     | 6             | <1.0%          |
| <b>Texas</b>                       | 4             | <1.0%          |
| <b>Total US States Represented</b> | 33            | 66%            |

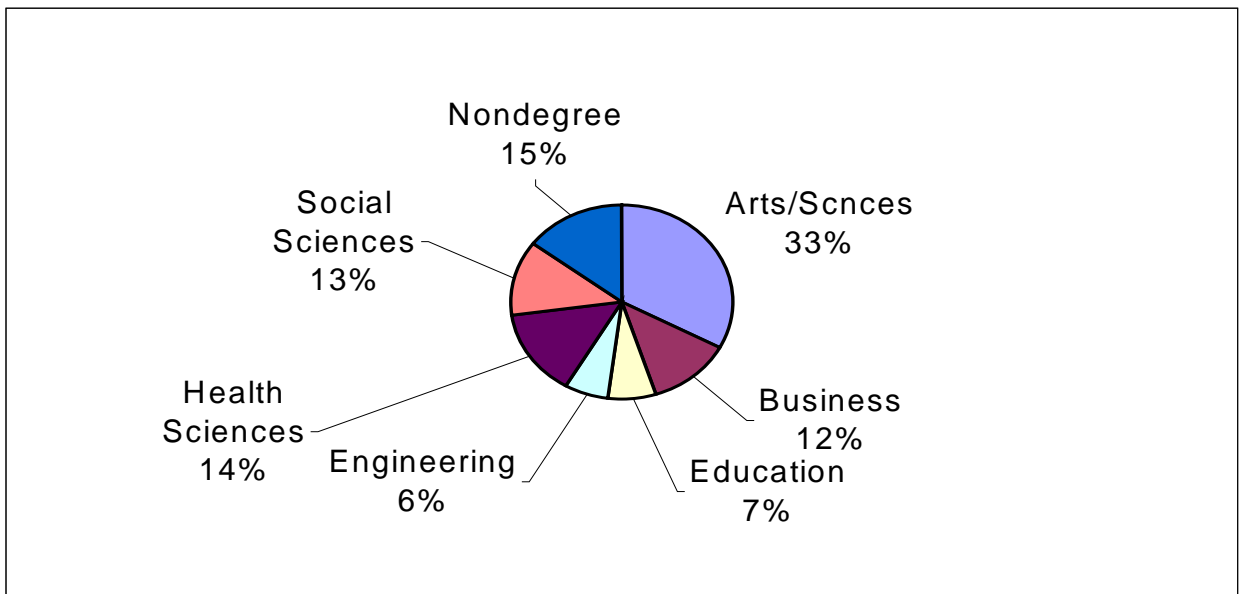
**Top Cities**

|                      | <b>Number</b> | <b>Percent</b> |
|----------------------|---------------|----------------|
| <b>Boise</b>         | 861           | 40%            |
| <b>Nampa</b>         | 154           | 7.2%           |
| <b>Meridian</b>      | 154           | 7.2%           |
| <b>Caldwell</b>      | 83            | 3.9%           |
| <b>Idaho Falls</b>   | 67            | 3.1%           |
| <b>Eagle</b>         | 64            | 3%             |
| <b>Mountain Home</b> | 60            | 2.8%           |
| <b>Emmett</b>        | 42            | 1.9%           |
| <b>Kuna</b>          | 41            | 1.9%           |
| <b>Pocatello</b>     | 20            | <1.0%          |
| <b>Middleton</b>     | 17            | <1.0%          |
| <b>Star</b>          | 14            | <1.0%          |

**Idaho Recruitment Regions:**



**College of Major**



### Top Majors

|                               | Number | Percent |
|-------------------------------|--------|---------|
| Undecided                     | 440    | 20.5%   |
| Nondegree Courses of Interest | 319    | 14.9%   |
| Pre-Nursing                   | 134    | 6.2%    |
| Elementary Education          | 83     | 3.9%    |
| Business-Undeclared           | 73     | 3.4%    |
| Psychology                    | 71     | 3.3%    |
| Criminal Justice              | 68     | 3.2%    |
| General Business              | 60     | 2.8%    |
| Music                         | 46     | 2.1%    |
| Pre-Medicine                  | 46     | 2.1%    |
| Biology                       | 45     | 2.1%    |
| Computer Science              | 44     | 2%      |
| Marketing                     | 38     | 1.8%    |
| Political Science             | 32     | 1.5%    |

### Years From High School

|                             | Number | Percent |
|-----------------------------|--------|---------|
| Straight from High School   | 1477   | 68.8%   |
| 1 Year From High School     | 193    | 9%      |
| 2 Years from High School    | 83     | 3.9%    |
| 3 Years from High School    | 101    | 4.7%    |
| 4 Years from High School    | 45     | 2.1%    |
| 5-10 Years from High School | 128    | 5.9%    |
| More than 10 Years          | 121    | 5.6%    |

### Top High Schools

|               | Number | Percent |
|---------------|--------|---------|
| Capital       | 139    | 6.5%    |
| Centennial    | 127    | 5.9%    |
| Borah         | 126    | 5.9%    |
| Meridian      | 121    | 5.6%    |
| Eagle         | 116    | 5.4%    |
| Timberline    | 85     | 4%      |
| Boise         | 83     | 3.9%    |
| GED           | 67     | 3.1%    |
| GED Idaho     | 64     | 3%      |
| Nampa         | 51     | 2.4%    |
| Kuna          | 49     | 2.3%    |
| Mountain Home | 47     | 2.2%    |
| Emmett        | 46     | 2.1%    |
| Skyview       | 41     | 1.9%    |
| Caldwell      | 39     | 1.8%    |
| Vallivue      | 36     | 1.7%    |
| Bishop Kelly  | 30     | 1.4%    |
| Middleton     | 28     | 1.3%    |

**High School GPA**

|  | <b>Number</b> | <b>Percent</b> |
|--|---------------|----------------|
| <b>&gt;=3.5</b>                                | 511           | 27.6%          |
| <b>3.0-3.49</b>                                | 587           | 31.7%          |
| <b>2.5-2.99</b>                                | 469           | 25.3%          |
| <b>2.0-2.49</b>                                | 214           | 11.6%          |
| <b>&lt;2.0</b>                                 | 70            | 3.8%           |
| <b>Average GPA (straight from high school)</b> |               | 3.3            |
| <b>Average GPA (overall new freshmen)</b>      |               | 3.14           |

**High School Class Rank**

|                                       | <b>Number</b> | <b>Percent</b>              |
|---------------------------------------|---------------|-----------------------------|
| <b>Top 10%</b>                        | 128           | 7.9%                        |
| <b>Top Quarter (includes top 10%)</b> | 396           | 24.3%                       |
| <b>Second Quarter</b>                 | 529           | 32.5%                       |
| <b>Third Quarter</b>                  | 453           | 27.9%                       |
| <b>Bottom Quarter</b>                 | 249           | 15.3%                       |
| <b>Average Class Rank</b>             |               | 56 <sup>th</sup> percentile |

**ACT Scores**

|                                    | <b>Number</b> | <b>Percent</b> |
|------------------------------------|---------------|----------------|
| <b>Top Quarter (24-36 Comp)</b>    | 349           | 23.9%          |
| <b>Second Quarter (21-23 Comp)</b> | 358           | 24.5%          |
| <b>Third Quarter (17-20 Comp)</b>  | 531           | 36.3%          |
| <b>Bottom Quarter (1-16 Comp)</b>  | 224           | 15.3%          |
| <b>Average ACT Composite</b>       |               | 21             |