

CAMPUS STANDARDS AND DESIGN GUIDELINES

UPDATED: JANUARY 2024



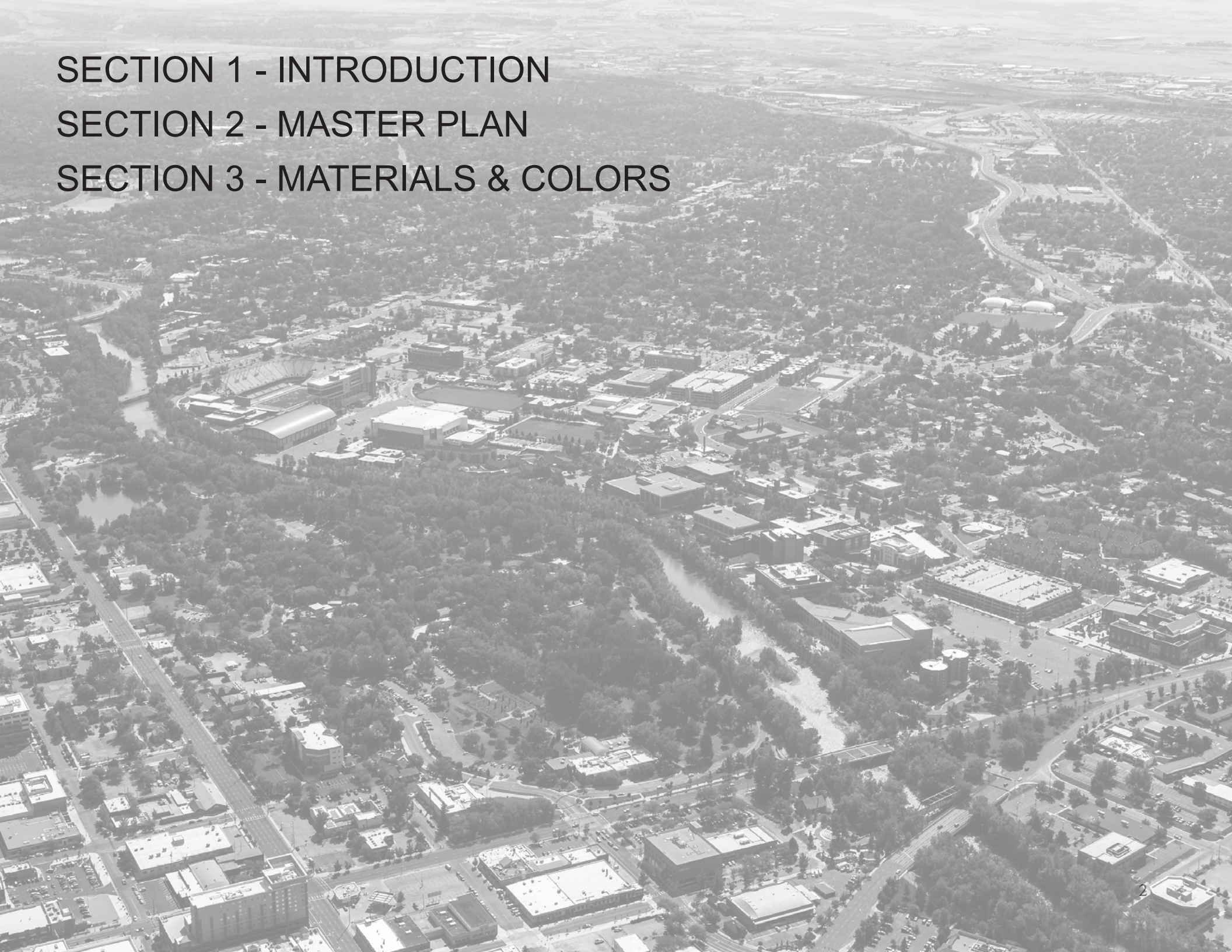
BOISE STATE UNIVERSITY

CAMPUS PLANNING AND FACILITIES

SECTION 1 - INTRODUCTION

SECTION 2 - MASTER PLAN

SECTION 3 - MATERIALS & COLORS



SECTION 1 - INTRODUCTION

GENERAL NOTES

INTENT

The Boise State University Campus Standards and Design Guidelines are standard and enforceable design guidelines for all design and construction work done on campus for use by in-house staff (architects, engineers, shops, etc.) and consultants. A coordinated effort between Campus Planning and Facilities staff has been made to compile these guidelines. They reflect the planning, construction and maintenance experience of persons responsible for the university facilities.

These guidelines are not intended to be a substitute for specifications prepared by design professionals and do not relieve any consultants from their responsibility to exercise due care in design and administration of Boise State University projects in a manner consistent with accepted standards of professional practice.

ORGANIZATION

These guidelines are to be used in conjunction with the Construction Specifications. For more detailed technical data on components design consultants should refer to the Construction Specifications.

The Campus Standards and Design Guidelines are prepared and published by the departments of Campus Planning and Facilities; Architectural and Engineering Services and Operations and Maintenance.

MODIFICATIONS

Adherence to the Design Guidelines and Construction Standards is mandatory unless a deviation has been approved in writing by the Boise State University Project Manager. Any equal or improved concept, method, or product will be given full consideration.

Sections of the Design Guidelines and Construction Standards will be revised and updated as experience or construction developments warrant.

GENERAL NOTES

MATERIALS AND COLORS - OVERVIEW

The materials, colors and finishes selected for Boise State University are a combination of long established elements of our campus and newer, more contemporary elements to allow continuity of materials and design, while also allowing an evolution of the palette with consistency and direction yet allowing innovation and growth.

These materials and colors are used both in new and existing facilities to improve familiarity and brand recognition for Boise State University while at the same time, providing high quality, innovative learning environments for students, faculty and staff. All areas on campus are high traffic, high use environments therefore, the materials must be of a quality and durability sufficient to provide long time use, while maintaining an appearance of representing a high quality urban university.

LANDSCAPE DESIGN PRINCIPLES - OVERVIEW

The design of campus landscapes should adhere to the following principles:

Campus landscapes should require low maintenance. Campus landscapes should conserve irrigation water.

Drought-tolerant plant materials should be used wherever possible.

Drip irrigation should be used wherever practical.

For new planting areas, pre-emergent weed control should be provided beneath the landscape bark.

Grass should only be used in areas that are large enough to easily maintain.

Concrete mow strips should be provided where lawn abuts planted areas

GENERAL NOTES



BOISE STATE UNIVERSITY

BRAND

In 1932, a group of students picked blue and orange as the school colors and the Bronco as the mascot. Boise State's heritage and tradition ring true today. The B logo as the University's signature mark represents the future, forward-moving direction of the university.

The Boise State Brand Standards establish consistent use of typography, colors and logos. Together, these elements provide instant recognition while conveying a sense of Boise State's character and style — the Boise State brand. A comprehensive identity program maintains the integrity of the Boise State brand and promotes maximum recognition and awareness of Boise State University.

The B logo is used judiciously and incorporated into the campus environment. It should only appear at main building entrances, lobbies and major exterior spaces, such as campus quads, plazas and nodes.

For more information on the Boise State University Brand Standards visit: <https://www.boisestate.edu/brand/>

SECTION 2 - MASTER PLAN

MASTER PLAN

Boise State is updating its campus Master Plan and focusing on providing the infrastructure to support the University's strategic direction in accordance to thoughtful input gathered from a multitude of stakeholders including: students, neighbors, administrators, faculty, staff and the Boise community. The campus has changed considerably since the last Master Plan was developed in 2005, and updated in 2008, more closely becoming the embodiment of the University's vision of being a Metropolitan Research Institution of Distinction. With new buildings, research facilities, degree programs, and athletic and recreation facilities, the University has experienced great growth over the past 10 years. Join us on our journey to determine what's next, and help shape the face of the Boise State campus for the future.





SECTION 3 - MATERIALS & COLORS

INTERIOR MATERIALS

PRINCIPLES

THESE STANDARDS TAKE INTO ACCOUNT THE UNIVERSITY'S NEUTRAL COLOR PALETTE, BRANDED COLORS, AND BRONCO PRIDE TO CREATE A CONSISTENT AND COHESIVE FEEL ACROSS CAMPUS.

ITEMS COVERED:

- 12 - Paint
- Carpet
- Walk-Off
- Wall Base
- Vinyl Composite Tile
- Luxury Vinyl Plank
- Rubber Flooring
- Fabric
- Laminate
- Solid Surfaces
- ACT/Acoustics
- Ceramic Tile (wall and floor)
- Wall Protection
- Corner Guards
- Metals
- Window Shades and Blinds
- Window Film
- Whiteboards
- Bulletin Boards
- Curtains
- Partitions

PAINT

Boise State University has selected these standard paint colors to be used that coincide with the University's primary and secondary colors (blue and orange).

**All Paint will be Sherwin Williams (SW) Eg-Shel

FIELD COLORS

P1 - ANCIENT IVORY, BM935, SW CUSTOM MATCH

P2 - CITY LOFT, SW7631

P3 - HIGH REFLECTIVE WHITE, SW7757

GRAY COLORS

P4 - ASPHALT GRAY, BEHR N520-6

P5 - INTERGALACTIC, BEHR N450-5

P6 - CALLIGRAPHY, BEHR N490-6

BLUE COLORS

P7 - BLUE CHIP, SW6959

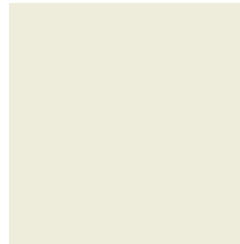
P8 - BLUEBLOOD, SW6966

P9 - COMMODORE, SW6524

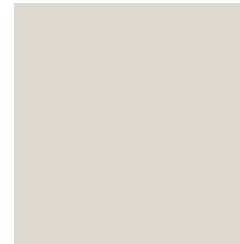
ORANGE COLORS

P10 - KNOCKOUT ORANGE, SW6885

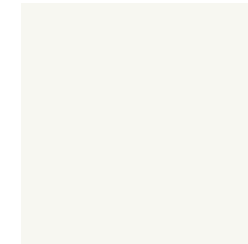
P11 - OBSTINATE ORANGE, SW6884



P1 - BM935



P2 - SW7631



P3 - SW7757



P4 - N520-6



P5 - N450-5



P6 - N490-6



P7 - SW6959



P8 - SW6966



P9 - SW6524



P10 - SW6885



P11 - SW6884

PAINT - GENERAL NOTES

Only approved paint colors from the University color palette may be used at the following locations:

Walls - Ancient Ivory, City Loft

Painted Ceilings - High Reflective White

Accent Walls - Asphalt Gray, Blues, Oranges

Trim - Asphalt Gray

In general, accent paint shall only be approved under the following conditions:

1. Only approved paint colors from the University color palette may be used.
2. Accent paint shall only be used as a main focal point to the room or as way-finding.
3. Accent paint must terminate at inside corners.
4. Under special circumstances such as specialty areas (dark rooms, AV backgrounds, theaters, etc), exceptions may be granted by AES or a delegated representative.

As a reminder, individuals cannot paint Boise State University spaces on their own. It is considered destruction of property owned by Boise State University and the State of Idaho. Individuals and/or departments could be held liable for such destruction.

CARPET

For additional technical details on these materials reference Boise State University's construction specifications. Carpet standards for buildings on campus can vary, please contact Architectural and Engineering Services (AES) before specifying a product.

CARPET TILE

CT1 - SHAW HYPE TILE IN "DYNAMIC" 64481

CT2 - SHAW REALM TILE IN "DISTANCE" 78597

CT3 - J+J ADAPT 7602 IN "ROYAL PATH" 3275

CT4 - J+J ADJUST 7601 IN "ROYAL PATH" 3275

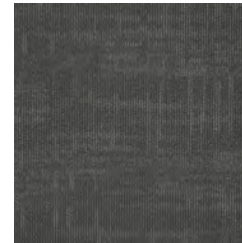
CT5 - J+J ADVANCE 7600 IN "ROYAL PATH"
3275

CT6 - J+J ADAPT 7602 IN "CARBON PATH"
3274

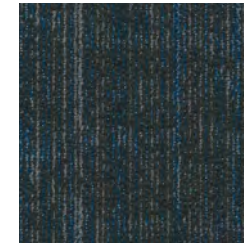
CT7* - SHAW INTENT IN "NOCTURNE" 08557
(LOW COST ALT, BY AES APPROVAL ONLY)



CT1



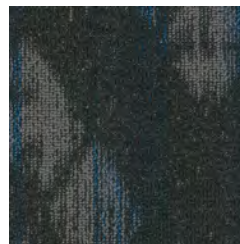
CT2



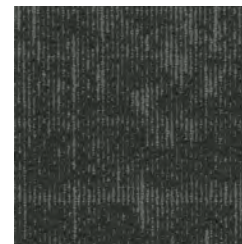
CT3



CT4



CT5



CT6



CT7*

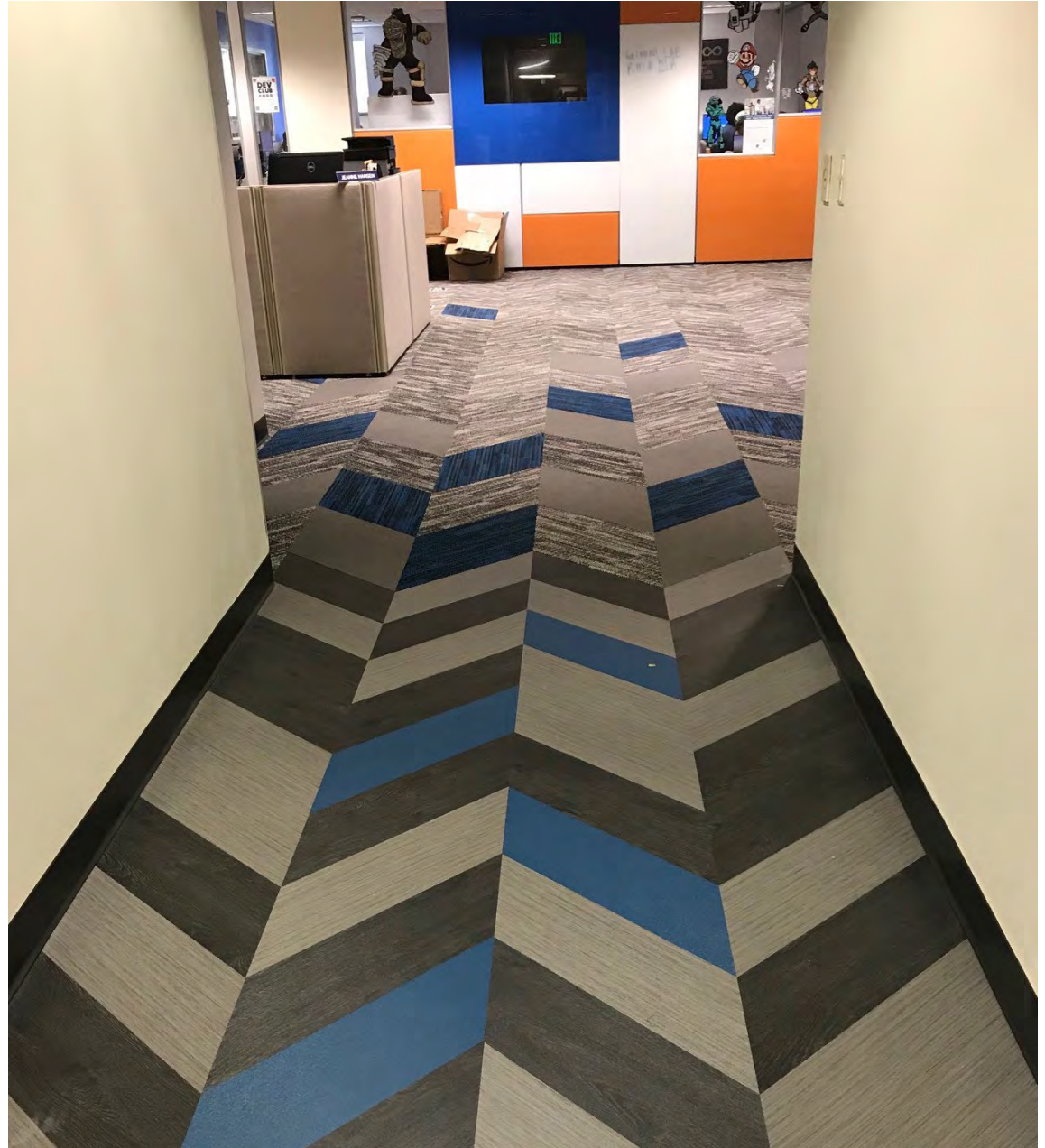
CARPET - CAMPUS EXAMPLES



Children's Center



Student Union Building



WALK-OFF

Walk-off mat to be used at every exterior entry.

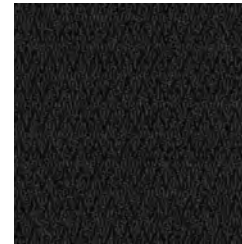
WALK-OFF MAT

WM1 - CONNEXUS SUPER NOP IN "GRIJIS/
CHARCOAL"

WM2* - MOHAWK FIRST STEP II IN "OBSIDIAN"
989 (BY AES APPROVAL ONLY)



WM1



WM2*

WALL-BASE

For additional technical details on these materials reference Boise State University's construction specifications.

RUBBER WALL BASE

WB1 - TARKETT RUBBER WALL BASE IN
"BURNT UMBER" 063



WB1

VINYL COMPOSITE TILE (VCT)

For additional technical details on these materials reference Boise State University's construction specifications. All Armstrong Standard Excelon Imperial Texture (SEIT) tiles are 12"x12"x1/8".

VINYL COMPOSITE TILE

VCT1 - ARMSTRONG SEIT TILE IN "FIELD GRAY" 51927

VCT2 - ARMSTRONG SEIT TILE IN "STERLING" 51904

VCT3 - ARMSTRONG SEIT TILE IN "PERFECT STORM" 57551

VCT4 - ARMSTRONG SEIT TILE IN "SOFT WARM GRAY" 51861

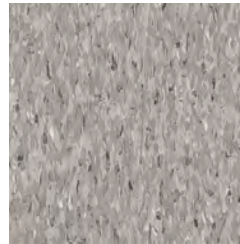
VCT5 - ARMSTRONG SEIT TILE IN "SILK" 59234

VCT6 - ARMSTRONG SEIT TILE IN "CIRQUE WHITE" 52513

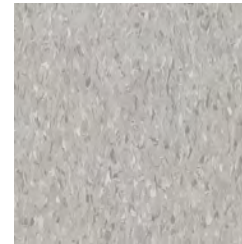
VCT7 - ARMSTRONG SEIT TILE IN "BODACIOUS BLUE" 57517

VCT8 - ARMSTRONG SEIT TILE IN "GENETIAN BLUE" 51946

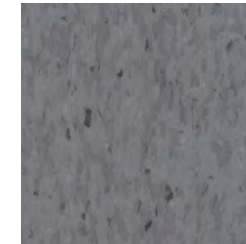
VCT9 - ARMSTRONG SEIT TILE IN "SCREAMIN PUMPKIN" 57516



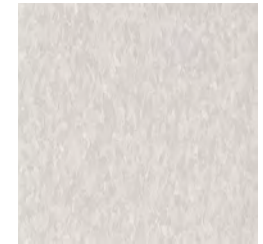
VCT1



VCT2



VCT3



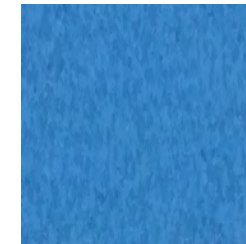
VCT4



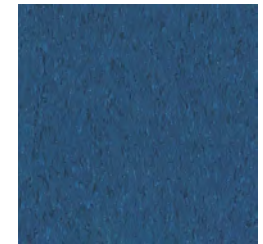
VCT5



VCT6



VCT7



VCT8



VCT9

LUXURY VINYL PLANK (LVP)

For additional technical details on these materials reference Boise State University's construction specifications. Please contact Architectural and Engineering Services (AES) for approval to use a Housing LVP in a non-Housing location.

LUXURY VINYL PLANK

LVP1* - KARNDEAN DESIGN, DA VINCI
COLLECTION IN "NATURAL OAK" RP102, 3MM
LOOSE LAY GLUE DOWN

*TYP USE IN HOUSING

LVP2* - KARNDEAN DESIGN, CHARACTER
IN "WALNUT" LLP315, 59"x9.85" LOOSE LAY
LONG BOARD

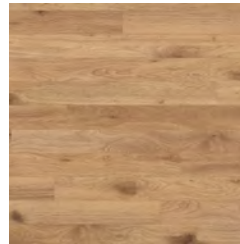
*TYP USE IN HOUSING

LVP3 - MOHAWK PREMIUM WOOD, LIVING
LOCAL IN "WESTERN WOODS" 123, 2.5MM

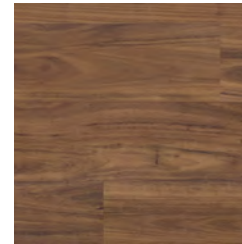
LVP4 - SHAW PIGMENT DIRECT GLUE 0503V
IN "BLUE" 65429

LVP5 - SHAW PIGMENT DIRECT GLUE 0503V
IN "CHARCOAL" 65595

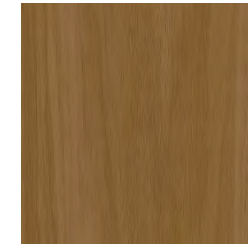
LVP6 - SHAW PIGMENT DIRECT GLUE 0503V
IN "GREY" 65530



LVP1*



LVP2*



LVP3



LVP4



LVP5



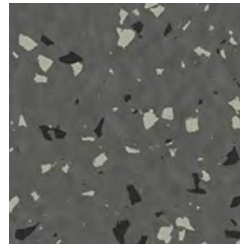
LVP6

RUBBER FLOORING

For additional technical details on these materials reference Boise State University's construction specifications.

RUBBER FLOOR

RF1 - NORA SYSTEMS, NORAMENT GRAND IN
"BLACK PEPPER" 5304

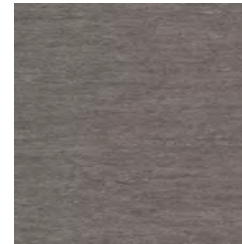


RF1

STATIC DISSIPATIVE

SD1* - HOMOGENEOUS SHEET VINYL,
TARKETT OPTIMA IN "HARDWIRED" 874

*FOR USE IN LABS



SD1*

FABRIC

Consult AES for when and where to use these fabrics and for appropriate coordinate finishes. For additional technical details on these materials reference Boise State University's construction specifications.

PATTERNED FABRIC

PF1 - MOMENTUM KNACK IN "FILAMENT"

PF2 - MOMENTUM KNACK IN "BRISK"

PF3 - MOMENTUM HOP IN "ALLOY"

PF4 - MOMENTUM HOP IN "MARINE"

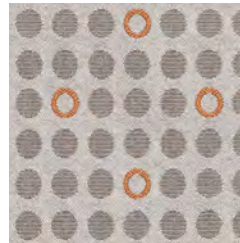
PF5 - MOMENTUM ABEAM IN "BLAZE"

PF6 - MOMENTUM ABEAM IN "NIGHTFALL"

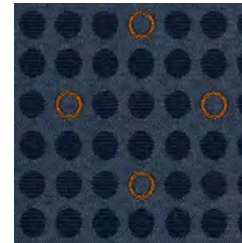
PF7 - MOMENTUM GLIDE IN "KOI"

PF8 - MOMENTUM GLIDE IN "CAPTAIN"

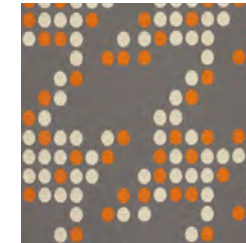
PF9 - ARCHITEX ELEMENT IN "COBALT"



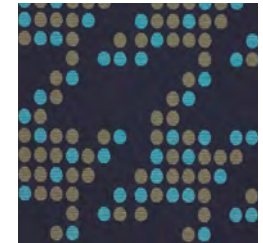
PF1



PF2



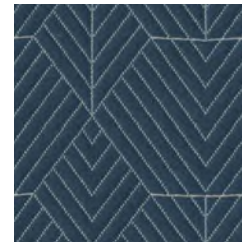
PF3



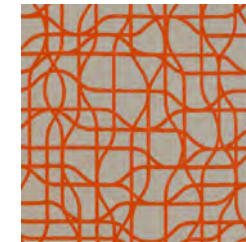
PF4



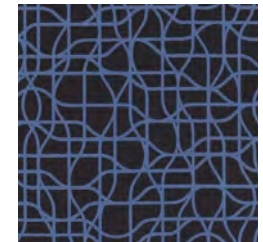
PF5



PF6



PF7



PF8

SOLID FABRIC

SF1 - MOMENTUM ODYSSEY C-ZERO IN "PRIMARY"

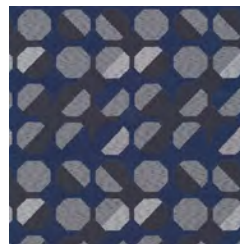
SF2 - MOMENTUM ODYSSEY C-ZERO IN "RUE"

SF3 - MOMENTUM ODYSSEY C-ZERO IN "CARBON"

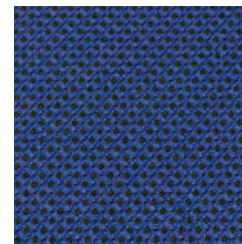
SF4 - ARCHITEX DRAPER IN "CASH"

SF5 - ARCHITEX DRAPER IN "SIXTH AVENUE"

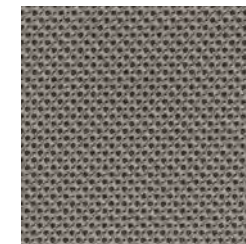
SF6 - ARCHITEX DRAPER IN "STOCK CLUB"



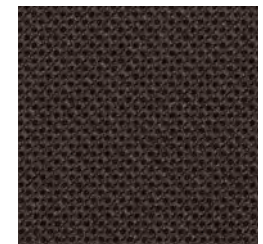
PF9



SF1



SF2



SF3



SF4



SF5



SF6

FABRIC - CONTINUED

Consult AES for when and where to use these fabrics and for appropriate coordinate finishes. For additional technical details on these materials reference Boise State University's construction specifications.

VINYL FABRIC

VF1 - ARCHITEX AUTHENTEC PERFORMANCE PRESCRIPTION IN "DUNBAR"

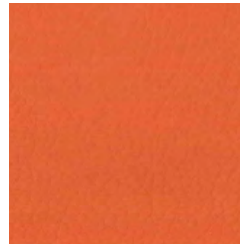
VF2 - ARCHITEX AUTHENTEC PERFORMANCE EVOLUTION IN "NAVY"

VF3 - ARCHITEX AUTHENTEC PERFORMANCE EVOLUTION IN "SCIENCE"

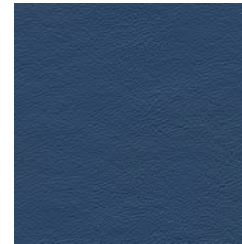
VF4 - ARCHITEX HAPPY IN "CELEBRATE"

VF5 - ARCHITEX HEALTHY IN "PILATES"

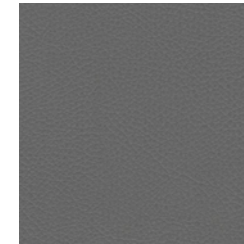
VF6 - ARCHITEX HEALTHY IN "STRETCH"



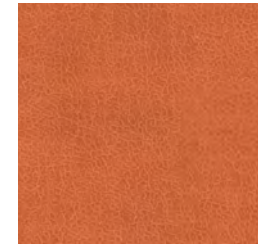
VF1



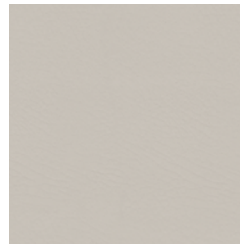
VF2



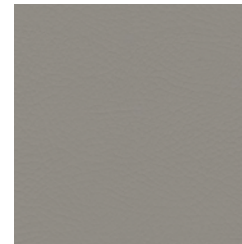
VF3



VF4



VF5



VF6

LAMINATE

For additional technical details on these materials reference Boise State University's construction specifications.

HORIZONTAL SURFACE LAMINATE

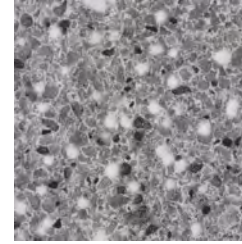
HL1 - ARBORITE P396 IN "ARCTIC TUNDRA"

HL2 - FORMICA 3518 IN "FLINT CRYSTALL"

HL3 - WILSONART 5035 IN "HANDSPUN SLATE"



HL1



HL2



HL3

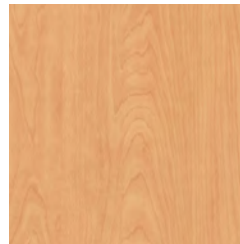
VERTICAL SURFACE LAMINATE

VL1 - FORMICA 7012 IN "AMBER MAPLE"

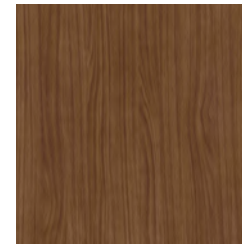
VL2 - WILSONART 7965 IN "WALNUT HEIGHTS"

VL3* - WILSONART 7919 IN "AMBER CHERRY"

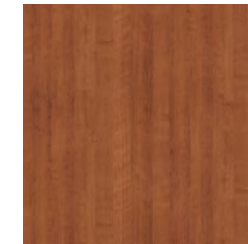
*(ONLY USE TO MATCH EXISTING)



VL1



VL2



VL3*

SOLID SURFACES

For additional technical details on these materials reference Boise State University's construction specifications.

SOLID SURFACES

SS1 - WILSONART 9203CE IN "DUSK ICE" OR 9204CE 'MORNING ICE'

SS2 - CORIAN QUARTZ IN "STORM GRAY"

SS3 - CAMBRIA IN "TRAVELLA"

SS4 - CAMBRIA MARBLE COLLECTION IN "TORQUAY"

SS5 - CAMBRIA IN "CARRICK"

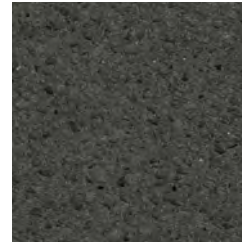
SS6 - CORIAN QUARTZ IN "GRAPHITE"

LAB GRADE SURFACES

***LS1** - EPOXY DURCON IN "GRAPHITE" *(FOR USE IN SCIENCE LABS)



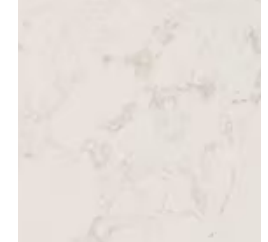
SS1



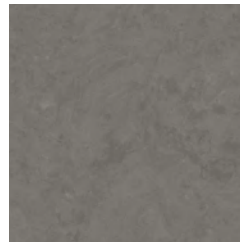
SS2



SS3



SS4



SS5



SS6



LS1

ACOUSTIC CEILING TILE (ACT)

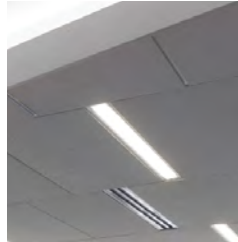
Consult Architectural and Engineering Services for where to use tegular tile.

ACOUSTIC CEILING TILE

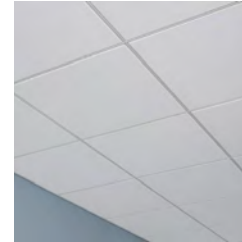
ACT1 - CERTAINTEED, SYMPHONY M WITH REVEAL BLENDED 15/16TH EDGE IN "WHITE".
2'x4'x3/4"

ACT2 - USG INTERIORS INC, MARS CLIMALPUS WITH SHADOWLINE TAPERED EDGE IN "WHITE"
2'x4'x3/4"

ACT3 - ARMSTRONG, ULTIMA WITH BEVELED TEGULAR EDGE IN "WHITE"
2'x4'x3/4"



ACT1



ACT 2



ACT 3

CERAMIC TILE - WALL AND FLOOR

Consult Architectural and Engineering Services for specific locations wall tile can be used. For additional technical details on these materials reference Boise State University's construction specifications.

WALL TILE

WT1 - DALTILE COLOR WHEEL CLASSICS IN "BISCUIT". HORIZONTAL RUNNING BOND PATTERN. GROUT, MAPEI IN "BISCUIT"

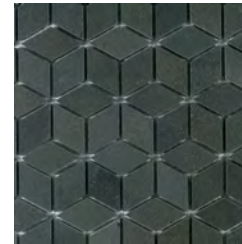
***WT2** - CEGI TILE, PINNACLE IN "ONYX", DALTILE # 9999468211. *TYPICAL IN BATHROOMS

WT3 - CONTEMPO WOW SOLO IN "GRAPHITE"

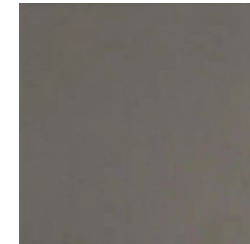
WT4 - CONTEMPO WOW DUO IN "GRAPHITE"



WT1



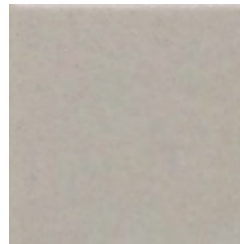
*WT2



WT3



WT4



*FT1

FLOOR TILE

***FT1** - AMERICAN OLEAN, UNGLAZED MOSAICS, "LIGHT SMOKE". *TYPICAL IN BATHROOMS

WALL PROTECTION

To be used in classrooms, conference rooms, breakout rooms, and other areas that need wall protection from chairs and tables.

VINYL WALL PROTECTION

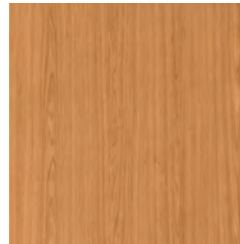
VWP1 - ACROVYN CLASSIC MAPLE 372

VWP2 - ACROVYN AMBER CHERRY 373

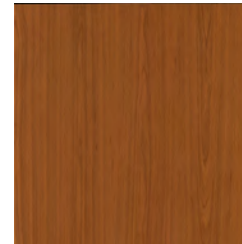
VWP3 - ACROVYN FOG 265

VWP4 - ACROVYN OZARK314

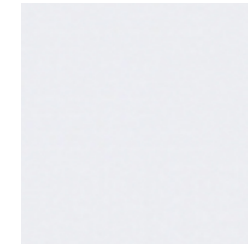
VWP5 - ACROVYN CHARCOAL 162



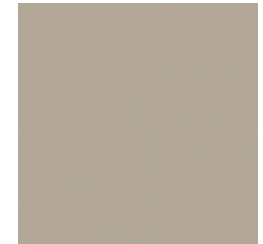
VWP1



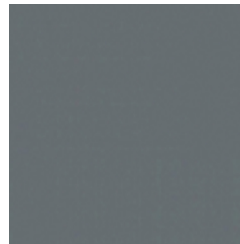
VWP2



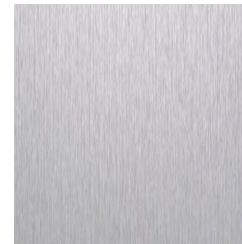
VWP3



VWP4



VWP5



CG*

CORNER GUARDS

*CORNER GUARDS ARE TO BE STAINLESS STEEL #4 FINISH, 16 GAUGE, 48" HIGH, 1.5"x1.5"

OR

***CG** - ACROVYN BRUSHED SILVER 410

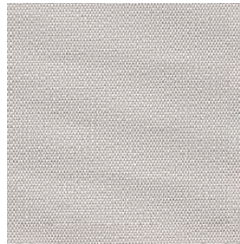
WINDOW SHADES AND BLINDS

Most classrooms, offices, conference or meeting rooms, and laboratories will require shading devices. Contact AES if you have questions about a certain space's needs.

WINDOW SHADES

WS1 - DRAPER LIGHT-FILTERING ROLLER SHADE IN 02.07 "WHITE/PEARL"

WS2 - DRAPER BLACK OUT ROLLER SHADE IN #P05 "WHITE/PLATINUM"



WS1



WS2

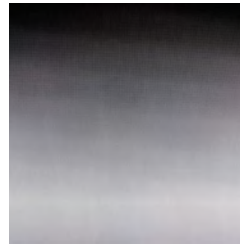
WINDOW FILM

For additional technical details on these materials reference Boise State University's construction specifications.

WINDOW FILM

WF1 - SOLYX SXJ-0561 FINE DOTS GRADIENT
(TYPICAL AT INDIVIDUAL OFFICE DOORS)

WF2 - HUPER OPTIK SELECT DREI
(TYPICAL AT EXTERIOR WINDOWS)



WF1

BULLETIN BOARDS

Consult Architectural and Engineering Services for approval of bulletin board / tack board locations. For additional technical details on these materials reference Boise State University's construction specifications.

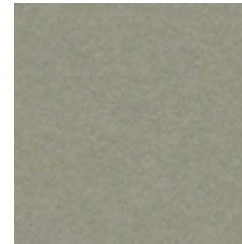
BULLETIN BOARDS

BB1 - FORBO BULLETIN BOARD IN "POTATO SKIN" 2182

***BB2** - WALL TALKERS TAC WALL IN "QUARRY" SMS21821 (*TO BE USED AS AN ALTERNATE)



BB1



BB2*

CURTAINS

Consult Architectural and Engineering Services with proposed locations to use curtains. For information on Window Shades and Blinds see page 27. For additional technical details on these materials reference Boise State University's construction specifications.

STAGE CURTAINS

SC1 - ROSE BRAND

ENCORE 2022 BLACK DRAPE - 22OZ NAP

DOWN, "100%" FULLNESS WITH BOX PLEATS

POLY WEBBING ON TOP EDGE - 3"

WEBBING HARDWARE ON 12" CENTERS

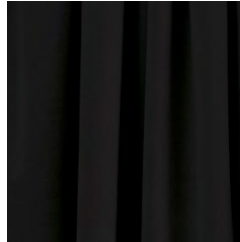
15OZ LINER SEWN TO TOP WEBBING -

CLOSED SIDES AND LOOSE BOTTOM

BOTTOM CHAIN HEM LINED - 5"

STAGE RIGHT AND LEFT FLAT HEM LINED - 2"

(USED AT THE MORRISON CENTER)



SC1