



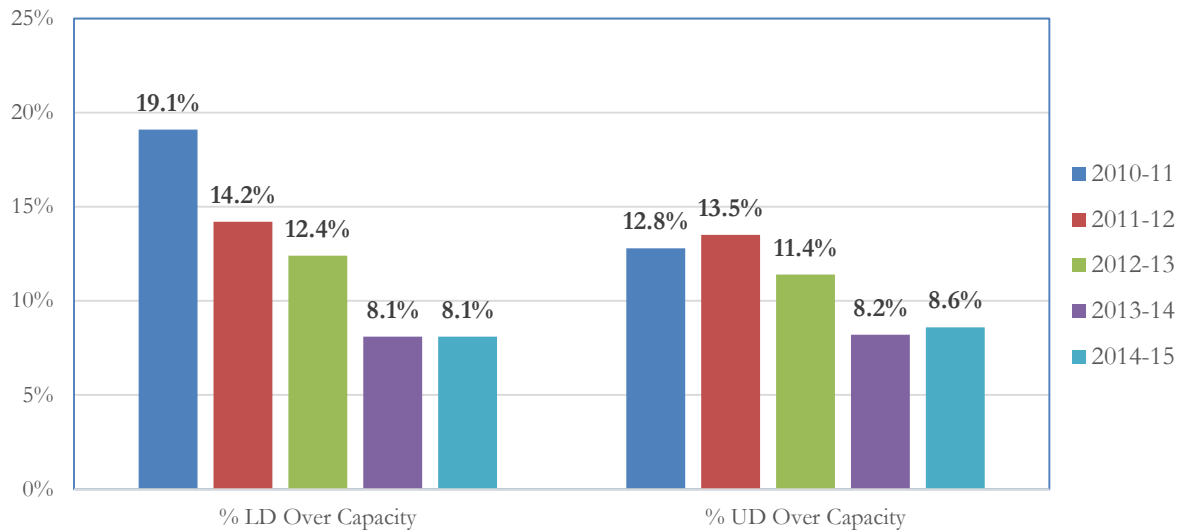
**BOISE STATE UNIVERSITY**  
**OFFICE OF INSTITUTIONAL RESEARCH**

Bottleneck Courses and their Departments, 2010-11 to 2014-15

In the fall and spring terms of 2014-15, Boise State University offered 967 lower division courses and 1,767 upper division courses at the undergraduate level as of tenth day reporting. After eliminating courses that had a low capacity, 874 lower division and 1,533 upper division courses remained. Of these, 71 lower division courses and 132 upper division courses were over capacity (>100% enrollment) and/or had a waitlist of 5 or more to enroll in the course. Appendix A lists the upper division bottleneck courses and Appendix B shows the lower division bottleneck courses. (Note that some courses appear multiple times because they were offered in both fall and spring.)

Bottlenecks have decreased substantially over the past five years as illustrated in Figure 1. At the lower division, the percentage of bottlenecks declined from 19% in 2010-11 to 8% in 2014-15. At the upper division, the bottleneck rate was highest in 2011-12 at 13.5% and has since dropped to 8.6% in 2014-15. In short, lower division bottlenecks have dropped and stabilized, while the upper division bottlenecks have decreased but continue to fluctuate. In each of the past two academic years, however, bottlenecks at both the upper-division and lower-division have been below 9%.

Courses Over Capacity as of 10th Day, Fall and Spring Semesters



In the 2014-15 Graduating Student Survey, 19.7% of students graduating with a bachelor’s degree reported having to delay graduation due to course availability. This is an improvement over prior years where 21.9% in 2012-13 and 21.7% in 2013-14 reported delays in their graduation due to course availability. The results by department for 2014-15 can be found in Appendix C.

Although the issue with bottlenecks is not resolved, Boise State has shown progress in reducing bottlenecks and the impact on students’ abilities to graduate in their desired timeframe.

**Appendix A. Upper division courses that were over-enrolled (capacity >100%) or had a waitlist of 5 or more**

Course	Course Title	Department	Term
ACCT 302	Survey of Fed Income Taxation	Dept of Accountancy	Spring 2015
ANTH 314	Environmental Anthropology	Dept of Anthropology	Fall 2014
ANTH 400	Hunter-Gatherers	Dept of Anthropology	Spring 2015
ANTH 425	Medical Anthropology	Dept of Anthropology	Spring 2015
ART 311	Drawing II	Dept of Art	Fall 2014
ART 413	Studio	Dept of Art	Fall 2014
ART 444	Advanced Photography	Dept of Art	Spring 2015
ART 477	Graphic Design Studio V	Dept of Art	Fall 2014
ART 488	Graphic Design Studio VI	Dept of Art	Spring 2015
ART 490	Senior Exhibition	Dept of Art	Fall 2014
ART 495	Capstone Review	Dept of Art	Spring 2015
ARTHIST 335	Art of the Bronze Age	Dept of Art	Fall 2014
ARTHIST 359	Pre-Columbian Art	Dept of Art	Fall 2014
ARTHIST 371	Hist of 20th Cent American Art	Dept of Art	Fall 2014
ARTHIST 499	Seminar	Dept of Art	Fall 2014
BIOL 301	Cell Biology	Dept of Biological Sciences	Fall 2014
BIOL 343	Genetics Lecture	Dept of Biological Sciences	Fall 2014
BIOL 400	Organic Evolution	Dept of Biological Sciences	Spring 2015
BIOL 413	Symbiosis	Dept of Biological Sciences	Spring 2015
CE 341	Construction Materials Lab	Dept of Civil Engineering	Fall 2014
CE 422	Hazardous Waste Engineering	Dept of Civil Engineering	Spring 2015
CHEM 431	Biochemistry I	Dept of Chemistry & Biochemistry	Fall 2014
CJ 317	Juvenile Justice	Dept of Criminal Justice	Fall 2014
CJ 425	Research Methods	Dept of Criminal Justice	Fall 2014
CJ 426	Statistics	Dept of Criminal Justice	Spring 2015
COMM 302	Research Methods	Dept of Communication	Fall 2014
COMM 307	Interviewing	Dept of Communication	Spring 2015
COMM 341	Nonverbal Communication	Dept of Communication	Spring 2015
COMM 360	Media Aesthetics and Culture	Dept of Communication	Fall 2014
COMM 361	Organizational Communication	Dept of Communication	Spring 2015
COMM 363	Advanced Journalistic Writing	Dept of Communication	Spring 2015
COMM 364	Visual Communication	Dept of Communication	Spring 2015
COMM 365	Film Styles and Genres	Dept of Communication	Fall 2014
COMM 412	Persuasion	Dept of Communication	Spring 2015
COMM 421	Theory and Philosophy of Comm	Dept of Communication	Fall 2014
COMM 432	Advanced Organizational Comm	Dept of Communication	Spring 2015
COMM 451	Communication Practicum	Dept of Communication	Spring 2015
COMM 471	Advanced Interpersonal Comm	Dept of Communication	Fall 2014
COMM 471	Advanced Interpersonal Comm	Dept of Communication	Spring 2015
COMM 481	Studies in Interpersonal Comm	Dept of Communication	Fall 2014
COMM 489	Advanced Studies in Media	Dept of Communication	Fall 2014
COMM 489	Advanced Studies in Media	Dept of Communication	Spring 2015
CS 321	Data Structures	Dept of Computer Science	Spring 2015
CS 354	Programming Languages	Dept of Computer Science	Fall 2014
CS 361	Intro to Theory of Computation	Dept of Computer Science	Fall 2014
CS 361	Intro to Theory of Computation	Dept of Computer Science	Spring 2015

Course	Course Title	Department	Term
CS 401	Intro to Web Development	Dept of Computer Science	Fall 2014
CS 410	Databases	Dept of Computer Science	Spring 2015
CS 425	Intro to Computer Networks	Dept of Computer Science	Spring 2015
ECE 310	Microelectronics Circuits	Dept of Electrical & Computer Engineering	Spring 2015
ECE 350	Signals and Systems	Dept of Electrical & Computer Engineering	Spring 2015
ECE 350L	Signals and Systems Lab	Dept of Electrical & Computer Engineering	Spring 2015
ECE 360	System Modeling and Control	Dept of Electrical & Computer Engineering	Fall 2014
ECON 303	Intermediate Microeconomics	Dept of Economics	Fall 2014
ECON 421	Quant Methods in Economics	Dept of Economics	Fall 2014
ED-CIFS 330	Elem Social Studies Curr & Ins	Dept of Curr, Instr & Fndtnl Stds	Spring 2015
ED-CIFS 331	Elementary Math Curr & Instruc	Dept of Curr, Instr & Fndtnl Stds	Spring 2015
ED-CIFS 332	Elem Classroom Mgmt Skills	Dept of Curr, Instr & Fndtnl Stds	Fall 2014
ED-CIFS 333	Elementary Science Curr & Inst	Dept of Curr, Instr & Fndtnl Stds	Spring 2015
ED-LTCY 340	ID Comprehensive Literacy Crse	Dept of Literacy	Spring 2015
ED-LTCY 345	Writ Pro & Assessment K-8 Clrm	Dept of Literacy	Fall 2014
ED-LTCY 440	Content Area Language Arts K-8	Dept of Literacy	Fall 2014
ENGL 332	Creative Writing Form & Theory	Dept of English	Spring 2015
ENGL 345	Shakespeare	Dept of English	Fall 2014
FINAN 411	Capital Budgeting and Planning	Dept of Marketing & Finance	Fall 2014
FINAN 440	Financial Modeling	Dept of Marketing & Finance	Spring 2015
GENBUS 441	Business In Society	Dept of Management	Fall 2014
GEOG 321	Sustainability of Nat Rsrcls	Dept of Geosciences	Fall 2014
GEOS 324	Petrography	Dept of Geosciences	Spring 2015
GEOS 345	Igneous&Metamorphic Petrology	Dept of Geosciences	Spring 2015
GEOS 498	Geosciences Senior Seminar	Dept of Geosciences	Spring 2015
HLTHST 356	Community-Based Prevent Method	Dept of Community & Environmental Health	Fall 2014
HLTHST 360	Healthcare Finance	Dept of Community & Environmental Health	Spring 2015
HLTHST 382	Research Methods in Health	Dept of Community & Environmental Health	Spring 2015
HLTHST 400	Interprofessional Capstone	Dept of Community & Environmental Health	Spring 2015
HLTHST 410	Health and Aging	Dept of Community & Environmental Health	Fall 2014
HLTHST 420	Strategic Planning & Proj Mgmt	Dept of Community & Environmental Health	Spring 2015
HLTHST 431	Quality Issues in Health Care	Dept of Community & Environmental Health	Fall 2014
HLTHST 466	Complementary Medicine	Dept of Community & Environmental Health	Fall 2014
HRM 305	Human Resource Management	Dept of Management	Spring 2015
HRM 330	Human Resource Law	Dept of Management	Fall 2014
HRM 330	Human Resource Law	Dept of Management	Spring 2015
INTPRGM 400	Education Abroad Program	Boise State University	Fall 2014
ITM 310	Business Intelligence	Dept of IT & Supply Chain Management	Fall 2014
ITM 315	Database Systems	Dept of IT & Supply Chain Management	Fall 2014
KINES 301	Statistics, Measurement & Eval	Dept of Kinesiology	Fall 2014
KINES 305	Adapted Physical Education	Dept of Kinesiology	Fall 2014
KINES 330	Exercise Physiology	Dept of Kinesiology	Spring 2015
KINES 331	Lab for Exercise Physiology	Dept of Kinesiology	Spring 2015
KINES 355	Elem Sch Hlt & PE Curr & Inst	Dept of Kinesiology	Fall 2014
KINES 363	Exercise Psychology	Dept of Kinesiology	Spring 2015
KINES 365	Soc Psyc of Sport & Phys Act	Dept of Kinesiology	Fall 2014
KINES 370	Biomechanics	Dept of Kinesiology	Fall 2014

<b>Course</b>	<b>Course Title</b>	<b>Department</b>	<b>Term</b>
KINES 370	Biomechanics	Dept of Kinesiology	Spring 2015
KINES 371	Laboratory for Biomechanics	Dept of Kinesiology	Fall 2014
KINES 371	Laboratory for Biomechanics	Dept of Kinesiology	Spring 2015
KINES 375	Human Growth & Motor Learning	Dept of Kinesiology	Fall 2014
KINES 376	Lab for Human Growth-Motor Lrn	Dept of Kinesiology	Fall 2014
KINES 430	Physical Activity and Aging	Dept of Kinesiology	Spring 2015
KINES 432	Conditioning Procedures	Dept of Kinesiology	Spring 2015
KINES 436	Exercise Test & Prescription	Dept of Kinesiology	Fall 2014
LING 305	Intro to Language Studies	Dept of English	Spring 2015
LING 498	Capstone in Linguistics	Dept of English	Spring 2015
MILSCI 301L	Adaptive Team Leadership Lab	Dept of Military Science	Fall 2014
MKTG 307	Customer Behavior	Dept of Marketing & Finance	Fall 2014
MKTG 321	Professional Selling	Dept of Marketing & Finance	Spring 2015
MKTG 420	Marketing Management	Dept of Marketing & Finance	Fall 2014
MKTG 425	Marketing Planning Apps	Dept of Marketing & Finance	Fall 2014
MKTG 425	Marketing Planning Apps	Dept of Marketing & Finance	Spring 2015
MSE 380	Materials Sci & Engr Lab	Dept of Materials Science & Engineering	Spring 2015
MUS 366	Instrumental Conducting	Dept of Music	Spring 2015
NURS 425	Nurs Leadership & Mgmt Lab	Dept of Nursing	Spring 2015
PHYS 341	Mechanics	Dept of Physics	Spring 2015
POLS 300	Intro to American Politics	Dept of Political Science	Fall 2014
POLS 300	Intro to American Politics	Dept of Political Science	Spring 2015
POLS 305	Intro to Comparative Politics	Dept of Political Science	Spring 2015
POLS 315	Intro to Political Thought	Dept of Political Science	Fall 2014
PSYC 343	Cognitive Psychology	Dept of Psychology	Fall 2014
PSYC 405	Advanced Statistical Methods	Dept of Psychology	Spring 2015
SCM 345	Principles of Operations Mgmt	Dept of IT & Supply Chain Management	Fall 2014
SCM 345	Principles of Operations Mgmt	Dept of IT & Supply Chain Management	Spring 2015
SCM 366	Supply Chain Modeling	Dept of IT & Supply Chain Management	Spring 2015
SCM 410	Supply Chain Trans & Distr	Dept of IT & Supply Chain Management	Fall 2014
SOC 301	Sociological Theory I	Dept of Sociology	Fall 2014
SOC 310	Elementary Social Statistics	Dept of Sociology	Fall 2014
SOC 311	Social Research	Dept of Sociology	Spring 2015
SOC 331	Deviant Behavior	Dept of Sociology	Fall 2014
SOCSOI 498	SEM: Soc Sci & Public Affairs	Dept of Sociology	Spring 2015
UF 300	Transitional Foundations	Boise State University	Fall 2014
ZOOL 301	Comparative Vertebrate Anatomy	Dept of Biological Sciences	Fall 2014
ZOOL 305	Entomology	Dept of Biological Sciences	Fall 2014
ZOOL 401	Human Physiology	Dept of Biological Sciences	Spring 2015

**Appendix B. Lower division courses that were over-enrolled (capacity>100%) or waitlist of 5 or more**

Course	Course Title	Department	Term
ACCT 205	Intro to Financial Accounting	Dept of Accountancy	Fall 2014
ACCT 206	Intro to Managerial Account	Dept of Accountancy	Fall 2014
ANTH 103	Introduction to Archaeology	Dept of Anthropology	Fall 2014
BUSSTAT 207	Statistical Tech Dec Making I	Dept of IT & Supply Chain Management	Fall 2014
CMGT 245	Drawings, Specs and Codes	Dept of Construction Management	Fall 2014
COMM 268	Intro to Video Production	Dept of Communication	Fall 2014
COMM 271	Introduction to Media	Dept of Communication	Fall 2014
CS 121	Computer Science I	Dept of Computer Science	Fall 2014
CS 121L	Computer Science I Lab	Dept of Computer Science	Fall 2014
ECE 230L	Digital Systems Lab	Dept of Electrical & Computer Engineering	Fall 2014
ED-CIFS 203	Child & Educational Psychology	Dept of Curr, Instr & Fndtnl Stds	Fall 2014
ENGL 101	Intro to College Writing	Dept of English	Fall 2014
ENGL 102	College Writing & Research	Dept of English	Fall 2014
ENGL 123	Academic ESL Writing III	Dept of English	Fall 2014
ENGL 202	Intro to Tech Comm	Dept of English	Fall 2014
ENGR 245L	Materials Science & Engr Lab	College of Engineering	Fall 2014
GENBUS 101	Business for New Generation	Dept of Management	Fall 2014
GEOS 212	Water in the West	Dept of Geosciences	Fall 2014
ITM 104	Oper Sys & Word Process Topics	Dept of IT & Supply Chain Management	Fall 2014
ITM 105	Spreadsheet Topics	Dept of IT & Supply Chain Management	Fall 2014
KINES 221	Athletic Training Clinical I	Dept of Kinesiology	Fall 2014
MATH 170	Calculus I	Dept of Mathematics	Fall 2014
ME 105	Mechanical Engr Graphics	Dept of Mechanical & Biomedical Engr.	Fall 2014
POLS 200	Introduction to Politics	Dept of Political Science	Fall 2014
RADSCI 104	Patient Assessment	Dept of Radiologic Sciences	Fall 2014
STEM-ED 210	Knowing and Learning	Boise State University	Fall 2014
THEA 102	Beginning Ballet I	Dept of Theatre Arts	Fall 2014
THEA 117	Technical Theatre I	Dept of Theatre Arts	Fall 2014
THEA 125	Jazz Dance	Dept of Theatre Arts	Fall 2014
THEA 213	Ballet II	Dept of Theatre Arts	Fall 2014
THEA 230	Devel of Theatre I: Classical	Dept of Theatre Arts	Fall 2014
UF 100	Intellectual Foundations	Boise State University	Fall 2014
UF 200	Civic and Ethical Foundations	Boise State University	Fall 2014
ACCT 206	Intro to Managerial Account	Dept of Accountancy	Spring 2015
ANTH 103	Introduction to Archaeology	Dept of Anthropology	Spring 2015
ART 107	Art Foundations I	Dept of Art	Spring 2015
BIOL 227	Human Anatomy and Physiology	Dept of Biological Sciences	Spring 2015
BUSSTAT 208	Stat Tech Dec Making II	Dept of IT & Supply Chain Management	Spring 2015
CMGT 111	Const Materials & Methods Lab	Dept of Construction Management	Spring 2015
CMGT 120	Intro to Construction Mgmt	Dept of Construction Management	Spring 2015
COMM 131	Listening	Dept of Communication	Spring 2015
COMM 221	Interpersonal Communication	Dept of Communication	Spring 2015
COMM 271	Introduction to Media	Dept of Communication	Spring 2015
COMM 279	Public Relations Campaigns	Dept of Communication	Spring 2015
CS 117	C++ for Engineers	Dept of Computer Science	Spring 2015
CS 121L	Computer Science I Lab	Dept of Computer Science	Spring 2015

ENGL 101	Intro to College Writing	Dept of English	Spring 2015
ENGL 101P	Intro to College Writing Plus	Dept of English	Spring 2015
ENGL 122	Academic ESL Writing II	Dept of English	Spring 2015
ENGR 245L	Materials Science & Engr Lab	College of Engineering	Spring 2015
GENBUS 101	Business for New Generation	Dept of Management	Spring 2015
GENBUS 202	The Legal Environ of Business	Dept of Management	Spring 2015
GEOS 242	Comm in the Earth Sciences	Dept of Geosciences	Spring 2015
HLTHST 202	Health Delivery Systems	Dept of Community & Environmental Health	Spring 2015
INTBUS 220	Go Global: You & World Economy	Program in International Business	Spring 2015
ITM 104	Oper Sys & Word Process Topics	Dept of IT & Supply Chain Management	Spring 2015
ITM 105	Spreadsheet Topics	Dept of IT & Supply Chain Management	Spring 2015
MATH 170	Calculus I	Dept of Mathematics	Spring 2015
MATH 175	Calculus II	Dept of Mathematics	Spring 2015
MATH 187	Discrete & Foundational Math	Dept of Mathematics	Spring 2015
MATH 189	Discrete Mathematics	Dept of Mathematics	Spring 2015
PSYC 101	General Psychology	Dept of Psychology	Spring 2015
SOCWRK 101	Introduction to Social Welfare	School of Social Work	Spring 2015
SOCWRK 201	Foundations of Social Work	School of Social Work	Spring 2015
THEA 210	Repertory Dance	Dept of Theatre Arts	Spring 2015
THEA 212	Movemnt & Dance Perform Artist	Dept of Theatre Arts	Spring 2015
THEA 215	Acting I	Dept of Theatre Arts	Spring 2015
THEA 220	Cinema History and Aesthetics	Dept of Theatre Arts	Spring 2015
THEA 231	Major Production Participation	Dept of Theatre Arts	Spring 2015
UF 100	Intellectual Foundations	Boise State University	Spring 2015
UF 200	Civic and Ethical Foundations	Boise State University	Spring 2015

Appendix C.

