

# Energy Policy Institute



We are an objective and evidence-based center that specializes in social and technical aspects of energy change. Sustainability, resilience, and innovation factor highly in our work. We bridge and integrate engineering, science, management, social science and the humanities.

## Research

The Energy Policy Institute has been at the foreground of emerging energy research, including that on small modular reactors, energy transitions, and consent-based siting for critical infrastructure. In 2023 alone, EPI secured [\\$26+ million](#) for the State and related work. Broadly, EPI's research spans energy priorities and technologies, with key examples such as wildfire-grid risk, energy's role in regional development, jobs and technology hubs, as well as electricity market governance.



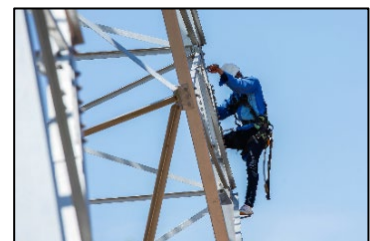
Today, EPI leads a [national energy consortium](#) specializing in consent-based siting for critical infrastructure. EPI also serves in a leadership role for Idaho's \$24 million research, education and workforce development on [energy-water resilience](#).

In recent years, the institute has also supported the [Idaho LINE Commission](#) and public by overseeing the development of nuclear waste technical reports. EPI has served in advisory roles for the [Idaho Strategic Energy Alliance](#) and Idaho Power's Integrated Resource Planning. In addition, EPI provided strategic management and research for the development of Boise State's first sustainability report.

## Education and Workforce Development

The Energy Policy Institute supports education and workforce development with hands-on training, analysis, and partnering. Through experiential learning, EPI engages students (graduate, undergraduate and high school) with [real-time energy questions and professional development](#). This includes the [Field School in Sustainability](#). Graduates who have worked with EPI faculty or staff have advanced to roles with Power Engineers, Idaho Office of Energy and Mineral Resources, Geothermal Rising, Amazon, Oregon Water Resources, General Atomics Aeronautical, Altura Ventures, Idaho National Lab, Allegheny Tech, etc.

EPI's workforce specialties include analyzing strategies for regional economic development by leveraging local capabilities and training. Related EPI work assesses the intersection of jobs and education to close skills gaps, and [K-12 energy education in Idaho](#).



Visit our website at <https://www.boisestate.edu/epi/> or email us at [epi@boisestate.edu](mailto:epi@boisestate.edu)

Specific to workforce partnering and additional types of training, EPI has been a founding member in the launch of Idaho's [certificate training on nuclear security and safeguards](#) with ISU, UI and INL. EPI also supports workforce readiness for Idaho's energy-water complexities with cross-sectoral partnership-building for students and researchers; the [Energy Systems Technology & Education Center](#), based at ISU; and the [Idaho Science & Technology Policy Fellowship Program](#), based at UI. In addition, EPI provides professional/executive training on carbon accounting and policy; small modular reactors and nuclear policy in the US; as well as biofuels policy and technology developments.

### **Community, Tribal and Industry Engagement**

The Energy Policy Institute regularly engages with communities, Tribes, and industry by facilitating discussions and conducting strategic analysis. The EPI-led consortium on consent-based siting, for example, is hosting public conversations in communities to develop recommendations for critical infrastructure processes. EPI also works with Tribes around Idaho on topics relating to regional energy-water resilience and energy security. Similarly, EPI engages with communities and industries to assess regional energy priorities and strategies.

EPI hosts a popular [Power Talks](#) series and energy conferences, attracting 3000+ participants from national labs and industry; to public agencies, think tanks, and academia; to Tribes and the general public. It is also a contributor to the National Council on Competitiveness "Future of Sustainability" and will be represented on a panel in the upcoming [Regional Mountain West Innovation Economy event](#), August 6-8, 2024.



### **Select Publications**

- What is the State of K-12 Energy Education in Idaho? *Blue Review*
- The Power Grid/Wildfire Nexus: Using GIS and Satellite Remote Sensing to Identify Vulnerabilities, *Fire*
- Global Biofuels at the Crossroads: An Overview of Technical, Policy and Investment Complexities in the Sustainability of Biofuels Development, *Agriculture* – best article
- A Meta-Level Framework for Evaluating Resilience in Net-Zero Carbon Power Systems with Extreme Weather Events in the United States, *Energies* – top cited
- An Assessment of Policies and Regional Diversification with Energy, Critical Minerals, and Economic Development in Emerging Markets, US DOE Microreactor Program
- Cybersecurity for Microreactors in Advanced Energy Systems, *Cyber Security*