



Optimizing ATDC5 Seeding of Graphene Foam for Cartilage Tissue Engineering

Olivia Nielson¹, Mone't Alberts², Josh Eixenberger³, Raquel Montenegro-Brown³, David Estrada³

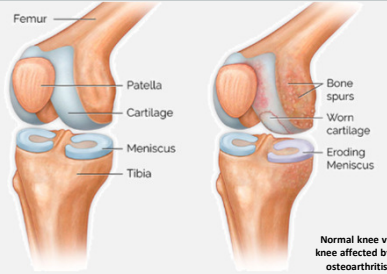


BOISE STATE UNIVERSITY

¹Department of Chemical and Biological Engineering, University of Idaho, Moscow, Idaho 83844
²School of Mechanical and Biomedical Engineering, Boise State University, Boise, Idaho 83725
³Micron School of Materials Science and Engineering, Boise State University, Boise, Idaho 83725

I. Introduction

Osteoarthritis (OA):



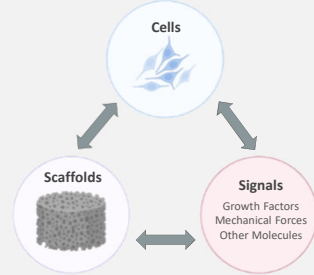
Normal knee vs knee affected by osteoarthritis

- 11th leading cause of disability worldwide
- Impacts 50% US population over 65
- Cartilage has limited regenerative capacity
- Current treatments are inadequate and expensive

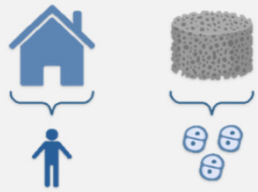
Prospective Treatment → Tissue Engineering (TE)

Advantages of Tissue Engineering:

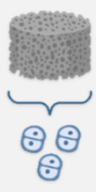
- Patient specific (individualized stem cell treatment)
- Regenerative approach
- Ability to utilize bioscaffolds to match mechanical properties of target tissue



Role of Bioscaffolds



People need a sturdy, reliable place to live



Cells need a framework to grow and thrive

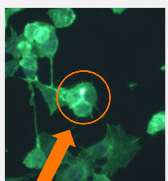
Graphene Foam → Prospective Bioscaffold:

- Superior mechanical strength which matches target tissue
- High electron mobility
- Thermal conductivity
- Biocompatible

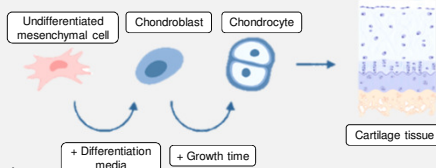
Challenge → Controlling cell differentiation:

- Must optimize cell adherence
- Must optimize cell characterization

Purpose: The goal of this work is to optimize the ATDC5 seeding and characterization protocols during 3D cell culture on graphene foam bioscaffolds for cartilage tissue engineering.

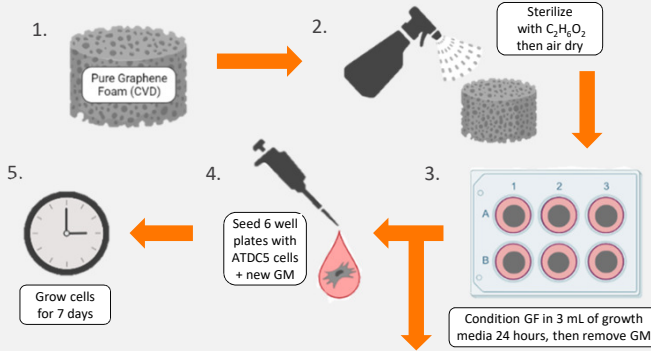


Three chondrocytes enclosed by one membrane



II. Materials and Methods

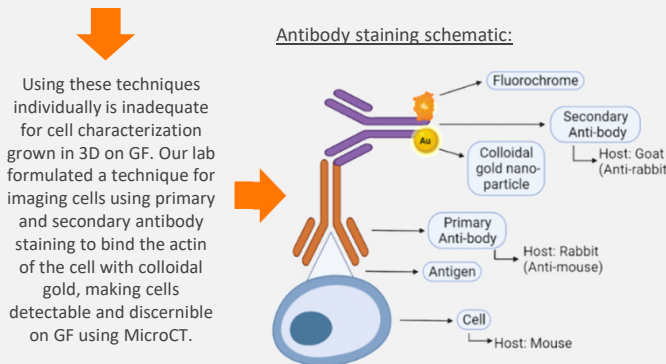
Cell Culture Workflow:



	Trial 1	Trial 2
Plate Treatment	None	Anti-Adherence Rinse
Cell Density (approx.)	5.5×10^3 cells	5.5×10^3 cells

Characterization Techniques:

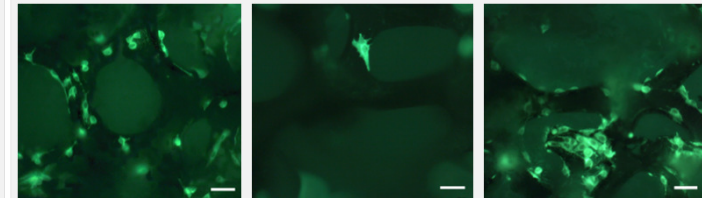
Structural properties	Fluorescence Imaging Microscopy	Scanning Electron Microscopy (SEM)	Microcomputed Tomography
Porosity			✓
Pore size		✓	✓
Surface Roughness		✓	✓
Pore Interconnectivity			✓
Live cell observation	✓		
Surface to volume ratio			✓
Composition GF		✓	
Topography GF		✓	



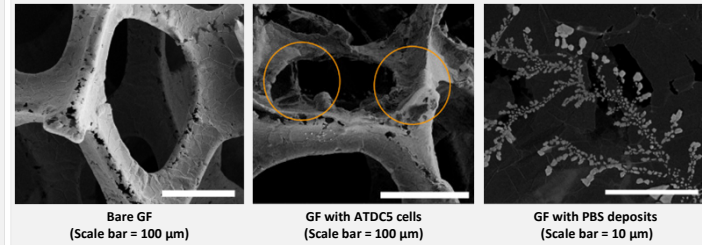
Using these techniques individually is inadequate for cell characterization grown in 3D on GF. Our lab formulated a technique for imaging cells using primary and secondary antibody staining to bind the actin of the cell with colloidal gold, making cells detectable and discernible on GF using MicroCT.

III. Results/Discussion: Quantifiable data

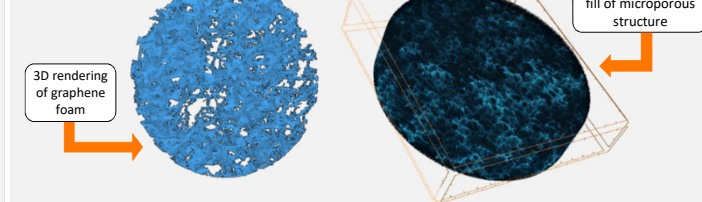
Fluorescence Imaging Microscopy:



Scanning Electron Microscopy:



MicroCT:



IV. Conclusion/ Future Work

- The anti-adherence rinse plate treatment resulted in minimal cell adherence to glass chamber slides forcing cells to adhere to the GF.
- No plate treatment resulted in most of the cells adhering to the bottom of the culture dish and few to GF, indicating that using anti-adherence rinse is the best method for seeding GF.
- Storing fixed cells on GF in PBS before staining resulted in salt crystals.
- A methanol rinse will be implemented as an alternative solution in the future to mitigate noise and nonspecific imaging during MicroCT. This work will lead to using graphene foam bioscaffolds as an active scaffold for electrical stimulus during 3D cell culture.

V. Acknowledgements and References

This material is based upon work supported by the National Science Foundation via Awards #1848516 and #1950305. The authors acknowledge infrastructure support from Department of Energy under Award #DE-NE0008677 and the National Institutes of Health under Awards #P20GM103408, #P20GM109095, and #1C06RR020533.

- [1] <https://www.mbortho.com/patients/education/Knee-Arthritis.htm>.
[2] Jacob Manzi for SEM images